

Copper Product Guide

V1

Excel is a world-class premium performing end-to-end infrastructure solution - designed, manufactured, supported and delivered - without compromise.



Excel is a world-class premium performance end-to-end infrastructure solution - designed, manufactured, supported and delivered - without compromise.

Excel is driven by a team of industry experts based in the UK, ensuring the latest innovation and manufacturing capabilities are implemented to surpass industry standards for quality and performance, technical compliance and ease of installation and use.

With an emphasis on compatibility and standards compliance 'from cable to rack', reliability and product availability, Excel is the complete trusted solution. Since the brand was launched to the UK market in 1997, Excel has enjoyed formidable growth and is sold in over 70 countries Worldwide. Excel has offices in Birmingham, St Neots and City of London in the UK and in Dubai in the United Arab Emirates.

The meteoric rise of the brand reflects a growing demand throughout the world for a reliable, standards-compliant, readily available, structured cabling and racking system. Excel is able to deliver this mix through a growing base of distributors and integrators across the region, which combine to make the brand an increasingly viable option.

With a focus on system performance, independent verification and a 25 year product and application warranty, when installed by an Excel Partner, it's easy to see why this is the system of choice in many government, education, retail, finance and enterprise installations.

This catalogue provides a complete overview of the Excel copper range, for details on the complete Excel range please visit www.excel-networking.com

Please be aware that not all products are available in every country, so please check with your local provider to check availability.

The Excel Range

The Excel range is extensive - this catalogue is dedicated to the copper range.

Listed below are the other product ranges that are currently available from Excel. Please visit www.excel-networking.com for full details.

Copper Structured Cabling Systems



Fibre Optic Cabling Systems



PON - Passive Optical Networks



Blown Fibre Cabling Systems



Environ Network Racks, Wall Racks & Open Frames



Residential/SoHo Cabling Systems



Voice Cabling Systems



Accessories & Testers



Whilst every attempt has been made to show exact photos of the products available within this catalogue, please note that sometimes only the style of the product is depicted.

Excel Modular Panel - Product Selector

The Excel Modular Panel range is compatible with a range of Keystone style jacks



Patch Panels

Excel 16 Port Unloaded Keystone Patch Panel Frame - Black	Excel 24 Port Unloaded Keystone Patch Panel Frame - Black	Excel 16 Port Unloaded Keystone Patch Panel Frame - Chrome
---	---	--

P/N 100-025

P/N 100-026

P/N 100-027



Modules

Excel Angled Butterfly Keystone Jack - Toolless

P/N 100-185 Chrome - Screened - Category 6_A

P/N 100-213 Black - Unscreened - Category 6



Excel Butterfly Keystone Jack - Toolless

P/N 100-801 Chrome Screened - Category 8

P/N 100-181 Chrome Low Profile Screened - Category 6_A

P/N 100-184 Chrome Shuttered Low Profile Screened - Category 6_A

P/N 100-182-WT White Low Profile Unscreened - Category 6_A

P/N 100-182-BK Black Low Profile Unscreened - Category 6_A

P/N 100-180 Screened Keystone Jack, Toolless - Category 6_A

P/N 100-210 Chrome Screened, Toolless - Category 6

P/N 100-215-WT White Low Profile Unscreened - Category 6

P/N 100-215-BK Black Low Profile Unscreened - Category 6

P/N 100-906 Chrome Screened - Category 5e

P/N 100-202-WT White Low Profile Unscreened - Category 5e

P/N 100-202-BK Black Low Profile Unscreened - Category 5e



Excel Unscreened Keystone Jack IDC

P/N 100-156 White Unscreened - Category 6_A

P/N 100-156-BK Black Unscreened - Category 6_A

P/N 100-011 White Unscreened - Category 6

P/N 100-011-BK Black Unscreened - Category 6

P/N 100-010 White Unscreened - Category 5e

P/N 100-010-BK Black Unscreened - Category 5e



Excel Screened Through Couplers

P/N 100-107 Chrome Screened - Category 6_A

P/N 100-106 Chrome Screened - Category 6



Excel Residential A/V Keystone Adaptors

P/N 100-805 1 Port 'F Type' Sat Coax Adaptor White

P/N 100-806 HDMI V1.4 Adaptor White

P/N 100-807 1 Port USB 3.0 Adaptor White A Type

P/N 100-809 1 Port USB 2.0 Adaptor White A Type



✓

✓

✓

✓

✓

✓

✓

✓

✓

✓

✓

✓

✓

✓

✓

✓

✓

✓

✓

✓

✓

✓

✓

✓

✓

✓

✓

✓

✓

✓

✓

✓

✓

✓

✓

✓

✓

✓

✓

✓

✓

✓

✓

✓

✓

✓

✓

✓

✓

✓

✓

✓

✓

✓

✓

✓

✓

✓

✓

✓

✓

✓

✓

✓

✓

✓

✓

✓

✓

✓

✓

✓

✓

✓

✓

✓

✓

✓

✓

✓

✓

✓

✓

✓

✓









✓

✓

✓

✓

✓

Excel 24 Port Unloaded Keystone Patch Panel Frame - Chrome	Excel 24 Port Unloaded Keystone Angled Patch Panel Frame - Black	Excel 24 Port Unloaded Keystone Angled Patch Panel Frame - Chrome	Excel 24-port Keystone V Patch Panel Frame - Black	Excel 24-port Keystone Patch Panel Frame, 0.5U	Excel 48-port Keystone Patch Panel Frame, 1U	Excel 48-port Keystone UTP Patch Panel Frame, 1U	Excel 10" 12-port Keystone Patch Panel Frame
P/N 100-028	P/N 100-023	P/N 100-024	P/N 100-040	P/N 100-041	P/N 100-042	P/N 100-050	P/N 100-753
							
	✓ ✓	✓ ✓					
✓ ✓ ✓ ✓ ✓ ✓ ✓ ✓ ✓ ✓			✓ ✓ ✓ ✓ ✓ ✓ ✓ ✓ ✓ ✓	✓ ✓ ✓ ✓	✓ ✓ ✓ ✓	✓ ✓ ✓ ✓	✓ ✓ ✓ ✓ ✓ ✓ ✓ ✓ ✓ ✓
✓ ✓ ✓ ✓ ✓ ✓			✓ ✓ ✓ ✓ ✓ ✓			✓ ✓ ✓ ✓	✓ ✓ ✓ ✓ ✓
✓ ✓			✓ ✓	✓ ✓	✓ ✓	✓ ✓	✓ ✓
✓ ✓ ✓ ✓ ✓			✓ ✓ ✓ ✓ ✓	✓ ✓ ✓ ✓	✓ ✓ ✓ ✓	✓ ✓ ✓ ✓	✓ ✓ ✓ ✓ ✓ ✓ ✓ ✓ ✓ ✓

Excel Category 6 Patch Panel - Product Selector

The Excel range offers a broad choice of PCB Board Cat 6 Patch Panel designs

Patch Panels				
Excel Category 6 Unscreened	Excel Category 6 Unscreened Right Angle Panel	Excel Plus Category 6 Unscreened	Excel Plus Category 6 Unscreened Modular Panel - Loaded	Excel Category 6 Screened
P/N 100-304 24 port - Black P/N 100-306 48 port - Black	P/N 100-302 24 port - Black P/N 100-394 48 port - Black	P/N 100-372 24 port - Black	P/N 100-016* 24 port - Black *use in conjunction with 100-017	P/N 100-013 24 port - Black
				
Rear management tray	✓	✓	✓	✓
Enhanced Slide Label System		✓		
Cage nuts and 1-96 label kit included	✓	✓	✓	✓
25 Year Warranty available	✓	✓	✓	✓

For copies of the product specification sheets and Delta certificates, where applicable, please visit the downloads area of www.excel-networking.com

Excel Category 5e Patch Panel - Product Selector

The Excel range offers a broad choice of PCB Board Cat5e Patch Panel designs

Patch Panels

	Excel Category 5e Unscreened	Excel Category 5e Unscreened Through Coupler	Excel Category 5e Unscreened	Excel Category 5e Unscreened	Excel Category 5e Unscreened Right Angle Panel	Excel Plus Category 5e Unscreened Right Angle Panel	Excel Category 5e Screened Right Angle Panel
	P/N 100-720 16 port - Black P/N 100-726 24 port - Black P/N 100-722 32 port - Black P/N 100-728 48 port - Black	P/N 100-309 24 port - Black	P/N 100-450 24 port - Blue P/N 100-451 24 port - Red	P/N 100-470 24 port - Black	P/N 100-460 24 port - Black P/N 100-497 48 port - Black	P/N 100-490 24 port - Black	P/N 100-736 24 port - Black
							
Rear management tray					✓	✓	✓
Enhanced Slide Label System				✓		✓	
Cage nuts and 1-96 label kit included	✓	✓	✓	✓	✓	✓	✓
25 Year Warranty available	✓	✓	✓	✓	✓	✓	✓

Excel Mounting Hardware

Product Selector

Excel offers a range of Keystone Jacks with compatible straight or angled shutters and faceplate mounting options



Keystone

Excel Category 6_A Screened Keystone Toolless Jack

P/N 100-180 - Chrome



Excel Category 6_A Low Profile Screened Keystone Toolless Jack

P/N 100-181 - Chrome



Excel Category 6_A Low Profile Unscreened Keystone Toolless Jack

P/N 100-182-WT - White

P/N 100-182-BK - Black



Excel Category 6_A Unscreened Keystone Jack

P/N 100-156 - White

P/N 100-156-BK - Black



Excel Category 6 Screened Keystone Toolless Jack

P/N 100-210 - Chrome



Excel Category 6 Unscreened Keystone Jack

P/N 100-011 - White

P/N 100-011-BK - Black



Excel Category 6 Low Profile Unscreened Keystone Toolless Jack

P/N 100-215-WT - White

P/N 100-215-BK - Black



Excel Category 5e Screened Keystone Toolless Jack

P/N 100-906 - Chrome



Excel Category 5e Low Profile Unscreened Keystone Toolless Jack

P/N 100-202-WT - White

P/N 100-202-BK - Black



Excel Category 5e Unscreened Keystone Jack

P/N 100-010 - White

P/N 100-010-BK - Black



Excel Category 6_A Screened Keystone Through Coupler

P/N 100-107 - Chrome



Excel Category 6 Screened Keystone Through Coupler

P/N 100-106 - Chrome



Shutter

Euromod 25 x 50 mm

Excel White Keystone Shutter

P/N 100-014



Excel Black Keystone Shutter

P/N 100-014-BK



Excel White Angled Shutter

P/N 100-175



Excel Black Angled Shutter

P/N 100-175-BK



[illegible]

Excel Mounting Hardware - Faceplate Product Selector



Shutter

Euromod 25 x 50 mm

Excel White
Keystone
Shutter

Excel Black
Keystone
Shutter

Excel White
Angled
Shutter

P/N 100-014

P/N 100-014-BK

P/N 100-175



Faceplate

Excel Single Gang Bevelled
Faceplate

P/N 100-712



✓

✓

✓

Excel Single Gang Flat
Faceplate

P/N 100-714



✓

✓

✓

Excel Double Gang Bevelled Faceplate

P/N 100-716



✓

✓

✓

Excel Double Gang Flat Faceplate

P/N 100-718



✓

✓

✓

Excel Single Gang 6c
Faceplate

P/N 100-670



Excel Double Gang 6c
Faceplate

P/N 100-671



Excel Office Single Gang
Faceplate c/w 2 half blanks

P/N 100-270



✓

Excel Office Double Gang
Faceplate c/w 2 half blanks

P/N 100-271



✓

Excel Office Single Gang
Faceplate c/w 2 half blanks - grey

P/N 100-270-GE



✓

✓

✓

Excel Office Double Gang
Faceplate c/w 2 half blanks - grey

P/N 100-271-GE



✓

✓

✓






		6c		Excel Office Dimension	
Excel Black Angled Shutter	Excel White Angled Shutter	Excel White Keystone 6c Shutter	Excel White Angled 6c Shutter	Excel Office White Angled Shutter	Excel Office Grey Angled Shutter
P/N 100-175-BK	P/N 100-020 & P/N 100-020-BK	P/N 100-018 & P/N 100-018-BK	P/N 100-022 & P/N 100-022-BK	P/N 100-280	P/N 100-280-GE
					
✓	✓				✓
✓	✓				✓
✓	✓				✓
✓	✓				✓
		✓	✓		
		✓	✓		
✓				✓	✓
✓				✓	✓
✓	✓			✓	✓
✓	✓			✓	✓



Excel Mounting Hardware - Faceplate Product Selector

Modules - Euromod

Modules		Face Plate	
		Excel Single Gang Bevelled	Excel Single Gang Flat
		P/N 100-712	P/N 100-714
			
Excel Category 6 Unscreened <u>P/N 100-300</u> - White <u>P/N 100-298</u> - Black		✓ ✓	✓ ✓
Excel Category 6 Unscreened Low Profile <u>P/N 100-366</u> - White <u>P/N 100-366-BK</u> Black		✓ ✓	✓ ✓
Excel Category 5e Unscreened <u>P/N 100-700</u> - White <u>P/N 100-730</u> - Blue <u>P/N 100-731</u> - Red <u>P/N 100-732</u> - Green		✓ ✓ ✓ ✓	✓ ✓ ✓ ✓
Excel Category 5e Unscreened Low Profile <u>P/N 100-760</u> - White <u>P/N 100-763</u> - Black <u>P/N 100-737</u> - Blue <u>P/N 100-738</u> - Red		✓ ✓ ✓ ✓	✓ ✓ ✓ ✓
Excel Category 5e Screened <u>P/N 100-706</u> - White		✓	✓
Excel Voice Modules Secondary - Euro Style <u>P/N 100-781</u> - White PABX - Euro Style <u>P/N 100-783</u> - White PSTN - Euro Style <u>P/N 100-785</u> - White PSTN - Euro Style, Left Hand Polarised		✓ ✓ ✓	✓ ✓ ✓
Excel Office Category 6 Unscreened Low Profile <u>P/N 100-276</u> - White <u>P/N 100-276-GE</u> - Grey		✓	✓
Excel Office Category 5e Unscreened Low Profile <u>P/N 100-275</u> - White <u>P/N 100-275-GE</u> - Grey		✓	✓

Excel Double Gang Bevelled	Excel Double Gang Flat	Excel Office Single Gang c/w 2 half blanks	Excel Office Double Gang c/w 2 half blanks	Excel Office Single Gang c/w 2 half blanks - grey	Excel Office Double Gang c/w 2 half blanks
P/N 100-716	P/N 100-718	P/N 100-270	P/N 100-271	P/N 100-270-GE	P/N 100-271-GE
					
✓ ✓	✓ ✓	✓	✓	✓ ✓	✓ ✓
✓ ✓	✓ ✓	✓	✓	✓ ✓	✓ ✓
✓ ✓ ✓ ✓	✓ ✓ ✓ ✓	✓ ✓ ✓	✓ ✓ ✓	✓ ✓ ✓ ✓	✓ ✓ ✓ ✓
✓ ✓ ✓ ✓	✓ ✓ ✓ ✓	✓ ✓ ✓	✓ ✓ ✓	✓ ✓ ✓ ✓	✓ ✓ ✓ ✓
✓	✓			✓	✓
✓ ✓ ✓	✓ ✓ ✓ ✓			✓ ✓ ✓	✓ ✓ ✓
✓ ✓	✓ ✓	✓ ✓	✓ ✓	✓ ✓	✓ ✓
✓ ✓	✓ ✓	✓ ✓	✓ ✓	✓ ✓	✓ ✓

Excel Mounting Hardware - Faceplate Product Selector

Modules - 6c



Face Plate

Excel
Single Gang
6c Faceplate

Excel
Double Gang
6c Faceplate

[P/N 100-670](#)

[P/N 100-671](#)



Keystone

Excel Category 6 Unscreened
RJ45 Module

[P/N 100-301](#) - White



✓

✓

Excel Category 6 Unscreened Low Profile
RJ45 Module

[P/N 100-297](#) - White



✓

✓

Excel Category 5e Unscreened Low Profile
RJ45 Module

[P/N 100-757](#) - White

✓

✓

Excel Category 5e Unscreened
RJ45 Module

[P/N 100-758](#) - White



✓

✓

Excel Voice Module Secondary - 6c Style

[P/N 100-787](#)



✓

✓

Excel Voice Module - PABX - 6C Style

[P/N 100-789](#) - White

✓

✓

CPR Construction Products Regulation



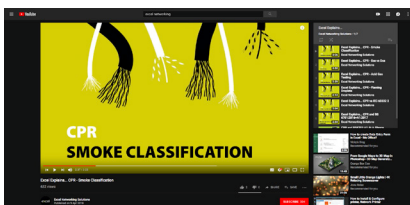
The CPR (Construction Products Regulation) has been around for over 15 years and the inclusion of communications cables - both Copper and Fibre - came into force on the 1st of July 2016.

All products supplied by Excel into the EU market since 1st July 2017 are CPR compliant. We demonstrate this through certificates known as Declarations of Performance (DOPs) (available on the Excel website, through labelling on product packaging, printing in the legend on the outer sheath of the cable jackets, or by the product being placed on the market prior to this date. A product's Euroclass also appears on all Excel Networking specification sheets and in forthcoming editions of the product catalogue, along with sub-classifications for smoke development (s), flaming droplets (d) and acidity (a).

The impact of BS6701:A1

BS6701:2016+A1:2017 states that the minimum Euroclass for telecommunications cable within scope of CPR shall be Cca s1b d2 a2. Excel products meet or exceed the minimum requirements defined within BS6701:2016+A1:2017.

Excel Explains...



Take a look at our Youtube Channel (www.youtube.com/excelnetworking) to view our first series of Excel Explains webinars, where we delve into the finer details of the Construction Products Regulation and the BS6701:A1.

Euroclass (ca)	Classification Criteria	Additional Criteria	Attestation of conformity system
A	EN ISO 1716 Gross heat of combustion		1+ Initial type-testing and continuous surveillance with audit testing of samples by 3rd party certification body factory production control (FPC) by manufacturer
B1	EN 50399 Heat release Flame spread	Smoke production (s1a, s1b, s2, s3) EN50399/EN61034-2	
B2		Acidity (a1, a2, a3) EN 50267-2-3	
C		Flaming droplets (d0, d1, d2) EN 50399	
D	EN 50575 Flame propagation		3 Initial type testing by 3rd party laboratory
E	EN 50575 Flame propagation		FPC by manufacturer
F			4 Initial type testing and FPC by manufacturer

Understanding CPR and BS6701:A1 at a glance...

Visit **www.excel-networking.com/understanding-cpr** to learn more and download our CPR Infographic.



Part Number	Description	Standard
100-070	Excel Category 6 Cable (U/UTP 24AWG PVC 200m Reel - Grey	Class 6
100-071	Excel Category 6 Cable (U/UTP 24AWG PVC 200m Reel - White	Class 6
100-071-1000m	Excel Category 6 Cable (U/UTP 24AWG PVC 1000m Reel - White	Class 6
100-071-300m	Excel Category 6 Cable (U/UTP 24AWG PVC 300m Reel - White	Class 6
100-072	Excel Category 6 Cable (U/UTP 24AWG PVC 200m Reel - Green	Class 6
100-074	Excel Category 6 Cable (U/UTP 24AWG PVC 200m Reel - White	Class 6
100-074	Excel Category 6 Cable (U/UTP 24AWG PVC 200m Reel - White	Class 6
100-074-1000m	Excel Category 6 Cable (U/UTP 24AWG PVC 1000m Reel - White	Class 6
100-074-300m	Excel Category 6 Cable (U/UTP 24AWG PVC 300m Reel - White	Class 6
100-075	Excel Category 6 Cable (U/UTP 24AWG PVC 200m Reel - Orange	Class 6
100-075-1000m	Excel Category 6 Cable (U/UTP 24AWG PVC 1000m Reel - Orange	Class 6
100-076	Excel Category 6 Cable (U/UTP 24AWG PVC 200m Reel - White	Class 6



Find **Declaration of Performance Certificates** on the Excel Website.

Cable Types

The first letter of the acronym describes the overall screening. The second letter describes the screening of individual pairs and the TP refers to the Twisted Pairs.

The reason for the additional letter at the beginning of the acronym is to avoid confusion of the different types of screened cables which have been developed in the last few years.

Example

	F/UTP
Describes the overall screen	↑
Describes the screening of the pairs	↑
Describes the Twisted Pairs	↑

The following are the types of cable recognised in the ISO/IEC 11801 standard.

<p>U/UTP</p> <p>Unscreened outer with unscreened twisted pairs</p>		<p>SF/UTP</p> <p>Screened braid and foil outer with unscreened twisted pairs</p>	
<p>F/UTP</p> <p>Screened foil outer with unscreened twisted pairs</p>		<p>S/FTP</p> <p>Screened braid outer with individual screened foil twisted pairs</p>	
<p>U/FTP</p> <p>Unscreened outer with two sets of two pairs foil screened in "S" configuration</p>		<p>F/FTP</p> <p>Screened foil outer with two sets of two pairs foil screened in "S" configuration</p>	



Excel Category 8 Screened S/FTP Dca LS0H Cable

The Excel Category 8 Screened S/FTP LS0H Cable is designed and manufactured to meet and exceed the ISO, CENELEC and TIA standards. This delivers Class FA link and channel performance supporting all applications detailed and proposed within the standards. The performance characteristics have been enhanced to 2000 MHz for specialist applications.

Each cable consists of 4 pairs individually wrapped in a covering of high quality, strong, aluminium/polyester foil tape providing an individual screen for each pair. These sub units are then cabled together, with the pairs set to different lay lengths to ensure optimum performance, an overall braid screen is applied to provide further immunity to outside noise and to mitigate any risk of alien cross talk.

Excel Category 8 cables are jacketed in a violet low smoke zero halogen (LS0H) flame retardant compound. The cable is supplied on 305 metre plywood drums, and the cable legend includes Euroclass information as standard for clear classification and traceability.

Features

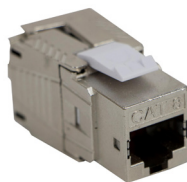
- Low Smoke Zero Halogen Jacket
- High performance design
- Individual foil pairs with overall braid screen
- 25 Year System Warranty
- Category 8 Performance to 2000 MHz
- 22 AWG Conductors
- 3rd Party Verified Component Compliance
- Dca Euroclass = Dca, s2, d2, a1

Description	Part Number
Category 8 Screened S/FTP Dca LS0H Violet Cable - 305m Reel	100-903

Excel Category 8 Screened Butterfly Toolless Jack

The Excel Category 8 cabling infrastructure has been designed to support short-distance (between 5 and 30 metres) runs of 25GBase-T or 40GBase-T transmission. A choice of compatible Patch Panel frames with either 16 or 24 port density in both black and chrome are available.

The socket itself is housed in a high-quality zinc die cast housing, which opens at the rear in a butterfly manner to reveal the IDC termination points. Once the pairs are arranged in the cable management cap and trimmed it is a simple case of closing the 'butterfly' together to complete the termination.



Features

- 25 Year System Warranty
- 360° Screen die cast housing
- Toolless termination design
- RoHS, Reach/SVHC compliant



Description	Part Number
Category 8 Screened Butterfly Toolless Jack	100-801

Excel Category 8 Field Termination RJ45 Plug

The Excel Category 8 Screened Field Termination RJ45 Plug offers easy, toolless termination and complies fully with ISO/IEC 11801, Category 8 and ANSI/TIA-568-C.2, Category 8 standards.

It offers a fully shielded die-cast zinc alloy, nickel plated body and gold-plated phosphor bronze contact pins. Suitable for cable diameters between 5.6 and 8.5mm, strain relief is provided by the compression nut on the back of the connector. IDC termination accepts wire gauges from 22 to 24AWG.



Features

- Fully Screened Category 8
- Die-cast zinc alloy construction
- Toolless - easy termination
- Supports 25-40 Gigabit Ethernet
- RoHS, Reach/SVHC compliant



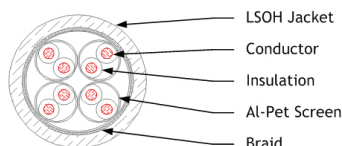
Description	Part Number
Category 8 Field Termination RJ45 Plug	100-802

Excel Category 7_A Screened S/FTP Cable - 1000 MHz

The Excel Category 7_A Screened S/FTP LS0H Cable is designed and manufactured to meet and exceed the ISO, CENELEC and TIA standards. This delivers Class F_A link and channel performance supporting all applications detailed and proposed within the standards. This superior performance cable is ETL Component Verified.

Each cable consists of 4 pairs individually wrapped in a covering of high quality, strong, aluminium/polyester foil tape providing an individual screen for each pair. These sub units are then cabled together, with the pairs set to different lay lengths to ensure optimum performance, an overall braid screen is applied to provide further immunity to outside noise and to mitigate any risk of alien cross talk.

Excel Category 7_A cables are jacketed in a yellow low smoke zero halogen (LS0H) flame retardant compound. Supplied on 500 metre plywood drums, each cable has a print legend identifying the specification, part code and sequential.



Features

- Low Smoke Zero Halogen Jacket
- Category 7_A Performance to 1000 MHz
- High performance design
- Individual foil pairs with overall braid screen
- 3rd Party Delta Verified Component Compliance
- Dca Euroclass = Dca S2 d2 a2
- B2ca Euroclass = B2ca s1a d1 a1



Description	Part Number
Category 7 _A Screened S/FTP Yellow B2ca LS0H Cable – 1000 MHz – 500m	190-910
Category 7 _A Screened S/FTP Violet B2ca LS0H Cable – 1000 MHz – 500m	190-910-VT
Category 7 _A Screened S/FTP Yellow Dca LS0H Cable - 1000 MHz - 500m	100-910
Category 7 _A Screened S/FTP Violet Dca LS0H Cable - 1000 MHz - 500m	100-910-VT
Category 7 _A Screened S/FTP Dual Yellow Dca LS0H Cable - 1000 MHz - 500m	100-911

Please check with your local Excel Sales Office or distributor for in country product availability

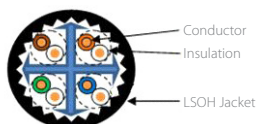
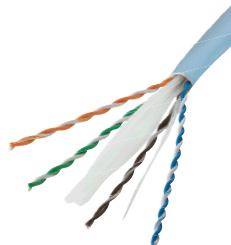
Excel Category 6_A Unscreened U/UTP Cable – LS0H

Excel Category 6_A cables, and associated connectors, take the performance capabilities of copper infrastructure to new levels.

Designed to the current ISO EN and TIA standards for Class EA / Category 6_A performance these products are intended to deliver reliable, high network performance over permanent link distances of up to 90 metres and channels up to 100m, including applications such as 10GBASE-T, 10 Gigabit Ethernet.

Each cable consists of 4 unscreened twisted pairs which are formed around a specifically designed X filler, manufactured from lightweight flexible polyethelene. The use of a X filler to separate and maintain the position of conductors within high frequency unscreened cable designs has become standard practice following their introduction into Category 6 cables some years ago. By controlling - and making consistent - the spacing and positioning of each pair in relation to the others within the cable performance levels can be assured and issues such as crosstalk within and between cables can be addressed.

Excel Category 6_A cables are jacketed in an Ice Blue low smoke zero halogen (LS0H) compound compliant with flame retardant standards as defined in IEC 60332-1 (option for IEC 60332-3), and smoke emission standards IEC61034. Supplied on 500 metre plywood drums, each cable has a print legend identifying the specification, part code and sequential metre marking which counts down from 500 metres to 1 metre, on each drum to reduce waste.



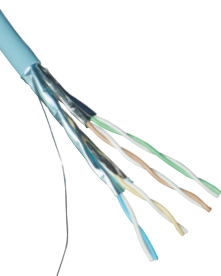
Features

- Category 6_A component compliant
- Suitable for 10 Gigabit, Ethernet applications
- Lightweight, Compact Round Design
- Low Smoke Zero Halogen Outer Sheath
- Conventional unscreened construction
- Compact, but robust, design
- Specified to 500MHz
- 25 Year System Warranty Available
- B2ca Euroclass = B2ca s1a d1 a1
- Dca Euroclass = Dca s2 d2 a1



Description	Part Number
Category 6 _A U/UTP Cable B2ca LS0H Ice Blue - 500m	190-189
Category 6 _A U/UTP Cable Dca LS0H Ice Blue - 500m	100-189

Excel Category 6_A Screened U/FTP S-Foil Cable - LS0H



CE



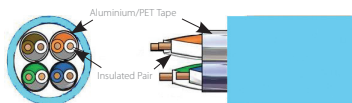
Photograph represents style only

**AVAILABLE
IN 305M BOX**
excel

Excel Category 6_A cables, and associated connectors, take the performance capabilities of copper infrastructure to new levels. The cable has been designed to exceed the ISO/IEC, TIA and CENELEC for Category 6_A component requirements. This delivers Class E_A link performance over distances of up to 90 metres which supports the applications including 10GBASE-T, 10 Gigabit Ethernet.

Each cable consists of two sets of two pairs wrapped together in an "S" configuration with high quality, strong, aluminium/polyester foil tape providing screening for each pair. The "S" Foil configuration ensures separation of the pairs which reduces the diameter and weight of the cable whilst enhancing the performance. This smaller cable diameter has reduced the cable cross-sectional area by 14.5%, meaning the cable occupies less space in the containment which in turn improves airflow in under floor installations and with less weight the containment used can be of a lighter construction. The individual pairs are set to different lay lengths to ensure optimum performance.

Excel Category 6_A cables are jacketed in an Ice Blue low smoke zero halogen (LS0H) compound compliant with flame retardant standards as defined in IEC 60332-1, and smoke emission standards IEC61034.



Features

- Lightweight, Compact Design
- Category 6_A compliant
- Specified to 500MHz
- Suitable for 10GBASE-T, 10 Gigabit Ethernet Applications
- "S" foil screen
- Supports Power over Ethernet (PoE) and Power over Ethernet Plus (PoE-*plus*)
- 305 m box – 260 x 490 x 485 mm (approx) – 16.1 kg (approx)
- 25 Year System Warranty Available
- B2ca Euroclass = B2ca s1a d1 a1
- Cca Euroclass = Cca s1a d1 a1
- Dca Euroclass = Dca s2 d2 a1
- Note: Part Number 100-199 - Dca Euroclass = Dca S2 d2 a2

Description	Part Number
Category 6 _A U/FTP "S" Foil Cable B2ca LS0H, 500m, Ice Blue	190-191
Category 6 _A U/FTP "S" Foil Cable B2ca LS0H, 305m, Ice Blue - Boxed	190-191-305M
Category 6 _A U/FTP "S" Foil Cable B2ca LS0H, 305m, White - Boxed	190-191-WT-305M
Category 6 _A U/FTP "S" Foil Cable B2ca LS0H, White, 500m	190-198
Category 6 _A U/FTP "S" Foil Cable Cca LS0H, 500m, Ice Blue	170-191
Category 6 _A U/FTP "S" Foil Cable Cca LS0H, 305m, Ice Blue - Boxed	170-191-305M
Category 6 _A U/FTP "S" Foil Cable Cca LS0H, 305m, White - Boxed	170-191-WT-305M
Category 6 _A U/FTP "S" Foil Dual Cable Cca LS0H, 500m, Ice Blue	170-194
Category 6 _A U/FTP "S" Foil Cable Cca LS0H, White, 500m	170-198
Category 6 _A U/FTP "S" Foil Cable Dca LS0H, 500m, Ice Blue	100-191
Category 6 _A U/FTP "S" Foil Cable Dca LS0H, 305m, Ice Blue - Boxed	100-191-305M
Category 6 _A U/FTP "S" Foil Cable Dca LS0H, White	100-198
Category 6 _A U/FTP "S" Foil Dual Cable Dca LS0H, 500m, Ice Blue	100-194
Category 6 _A U/FTP "S" Foil Dual Cable Dca* LS0H, 500m, Ice Blue	100-199

Note: Part Number 100-199 - Dca Euroclass = Dca S2 d2 a2



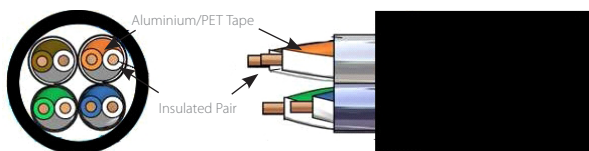
A PART OF
FORCE
REGULATORY



Category 6_A Screened U/FTP S-Foil Cable External Grade

Excel External Category 6_A Screened U/FTP Cable designed to offer performance with the protection to allow it to be installed externally. Ideal for connecting external equipment such as IP Cameras or Wireless Access Points using a cable that can be installed into external ducts and pathways. Each cable consists of two sets of two pairs wrapped together in an "S" configuration with high quality, strong, aluminium/polyester foil tape providing screening for each pair. The "S" Foil configuration ensures separation of the pairs which reduces the diameter and weight of the cable whilst enhancing the performance. This smaller cable diameter has reduced the cable cross-sectional area by 14.5%, meaning the cable occupies less space in the containment which in turn improves airflow in under floor installations and with less weight the containment used can be of a lighter construction. The individual pairs are set to different lay lengths to ensure optimum performance.

Excel external grade Category 6_A cables are jacketed in Black UV and moisture resistant polyethylene. Supplied on 500 metre plywood drums, each cable has a print legend identifying the specification, part code and sequential metre marking which counts down from 500 metres to 1 metre, on each drum to reduce waste.



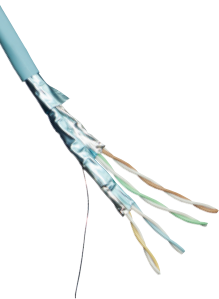
Features

- 25 Year System Warranty Available
- Category 6_A compliant
- Specified to 500MHz
- "S" foil screen
- Supplied on 500m reels
- External Grade Polyethylene Outer Sheath
- Supports 10 Gigabit Ethernet Application

Description	Part Number
Category 6 _A U/FTP External Cable Fca - 500m	100-980



Excel Category 6_A Screened F/FTP S-Foil Cable - LS0H

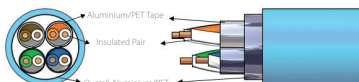


CE

Excel Category 6_A - Augmented Category 6 - cables, and associated connectors, take the performance capabilities of copper infrastructure to new levels. The cable has been designed to exceed the ISO/IEC, TIA and CENELEC for Category 6_A/Augmented Category 6 component requirements. This delivers Class E_A/Augmented Category 6 link performance over distances of up to 90 metres which supports the applications including 10GBASE-T, 10 Gigabit Ethernet.

Each cable consists of two sets of two pairs wrapped together in an "S" configuration with high quality, strong, aluminium/polyester foil tape providing screening for each pair. The "S" Foil configuration ensures separation of the pairs which reduces the diameter and weight of the cable whilst enhancing the performance. This smaller cable diameter has reduced the cable cross-sectional area by 14.5%, meaning the cable occupies less space in the containment which in turn improves airflow in under floor installations and with less weight the containment used can be of a lighter construction. The individual pairs are set to different lay lengths to ensure optimum performance.

Excel Category 6_A cables are jacketed in an Ice Blue low smoke zero halogen (LS0H) compound compliant with flame retardant standards as defined in IEC 60332-1, and smoke emission standards IEC61034. Supplied on 500 metre plywood drums, each cable has a print legend identifying the specification, part code and sequential metre marking which counts down from 500 metres to 1 metre, on each drum to reduce waste.



Features

- Lightweight, Compact Design
- Category 6_A compliant
- Specified to 500MHz
- Suitable for 10GBASE-T, 10 Gigabit Ethernet Applications
- "S" foil screen
- Supports Power Over Ethernet (POE) Plus
- 25 Year System Warranty Available
- B2ca Euroclass = B2ca s1a d1 a1
- Cca Euroclass = Cca s1a d1 a1
- Dca Euroclass = Dca s1a d1 a1

Description	Part Number
Category 6 _A F/FTP "S" Foil Cable B2ca LS0H, 500m, Ice Blue	190-196
Category 6 _A F/FTP "S" Foil Cable Cca LS0H, 500m, Ice Blue	170-196
Category 6 _A F/FTP "S" Foil Dual Cable Cca LS0H, 500m, Ice Blue	170-197
Category 6 _A F/FTP "S" Foil Cable Dca LS0H, 500m, Ice Blue	100-196
Category 6 _A F/FTP "S" Foil Cable Dca LS0H, 500m, Orange	100-196-OR
Category 6 _A F/FTP "S" Foil Cable Dca LS0H, 500m, Green	100-196-GN
Category 6 _A F/FTP "S" Foil Dual Cable Dca LS0H, 500m, Ice Blue	100-197
Category 6 _A F/FTP "S" Foil Dual Cable Dca LS0H, 500m, Ice Blue	100-206



Excel Category 6_A Screened Twisted Pair Cable S/FTP

The Excel Category 6_A screened S/FTP LS0H cable is designed and manufactured to meet and exceed the ISO, Cenelec and TIA standards. This delivers Class Ea link and channel performance supporting all applications detailed and proposed within the standards. This superior performance cable is 3rd Party Component Verified.

Each cable consists of 4 pairs individually wrapped in an overall covering of high quality aluminium/polyester foil tape providing an individual screen for each pair. These sub units are then cabled together with the pairs set to different lay lengths to ensure optimum performance, an overall braid screen is applied to provide further immunity to outside noise and to mitigate any risk of alien cross talk.

Excel Category 6_A S/FTP cables are jacketed in a white, grey or orange low smoke zero halogen (LS0H) flame retardant compound. Supplied on 500 metre plywood drums, each cable has a print legend identifying the specification, part code and sequential metre marking.

Features

- 500mtr Reel
- White Outer Sheath
- Low Smoke Zero Halogen Jacket
- 25 Year System Warranty Available
- B2ca Euroclass = B2ca s1 d1 a1
- Dca Euroclass = Dca s2 d2 a2



Description	Part Number
Excel Category 6 _A S/FTP Screened Cable B2ca – White – 500m	190-914
Excel Category 6 _A S/FTP Screened Cable Dca – White – 500m	100-914
Excel Category 6 _A S/FTP Screened Cable Dca - White (Dual) – 500m	100-915
Excel Category 6 _A S/FTP Screened Cable Dca - Grey – 500m	100-914-GRY
Excel Category 6 _A S/FTP Screened Cable Dca – Orange – 500m	100-914-ORG

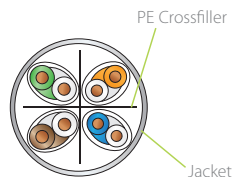
Excel Category 6_A Unscreened Twisted Pair (U/UTP) Patch Leads - LS0H



Excel Category 6_A U/UTP patch leads consist of 4 twisted pairs of 26AWG stranded copper wires. These pairs are then cabled together, with different lay lengths to ensure optimum performance. Staggered pin RJ45 plugs, terminate the cable, and each lead is fitted with colour coded slimline moulded boots, suitable for use in high density router or switch blades.

Features

- Specified to 500MHz
- Suitable for 10 Gigabit, 10GBase-T, Ethernet application
- EC verified
- Blade style 'slimline' moulded strain relief boot with clip protector
- Choice of length and colour
- Low smoke zero halogen outer sheath
- 25 Year System Warranty Available



Length (M)	Grey	Blue	Red	Yellow	Green
1	100-500	100-509	100-519	100-529	100-539
2	100-501	100-510	100-520	100-530	100-540
3	100-502	100-511	100-521	100-531	100-541
5	100-503	100-512	100-522	100-532	100-542

Alternative lengths and colours are available subject to minimum order quantities and lead times.

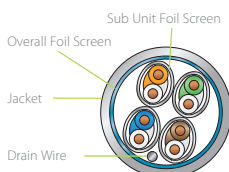
Excel Category 6_A Screened Twisted Pair (F/FTP) Patch Leads - LS0H

Excel Category 6_A F/FTP patch leads consist of 4 twisted pairs of 26AWG stranded copper wires, an aluminium/polyester foil tape provides an individual screen for each pair. These pairs are then cabled together, with different lay lengths to ensure optimum performance and wrapped in an overall foil tape screen. Staggered pin RJ45 shielded plugs, terminate the cable, and each lead is fitted with colour coded slimline moulded boots, suitable for use in high density router or switch blades.



Features

- Specified to 500MHz
- Suitable for 10 Gigabit, 10GBase-T, Ethernet application
- EC verified
- Individual foil screen over each pair plus overall foil tape screen
- Blade style 'slimline' moulded strain relief boot with clip protector
- Low smoke zero halogen outer sheath
- 25 Year System Warranty Available
- Compatible with Excel F/FTP cable - part number 100-196



**RANGE
EXTENDED**
excel



Length (M)	Grey	Blue	Red	Yellow	Green
0.3	101-130	101-131	101-132	101-133	101-134
0.5	100-176	100-220	100-221	100-222	100-223
1	100-148	100-159	100-161	100-166	100-173
1.5	101-140	101-141	101-142	101-143	101-144
2	100-152	100-157	100-162	100-167	100-171
3	100-153	100-158	100-163	100-168	100-172
4	100-149	-	-	-	-
5	100-154	100-160	100-165	100-170	100-174
7	100-178	-	-	-	-
10	100-177	100-261	100-262	100-263	100-264
15	100-265	100-266	100-267	100-268	100-269
20	100-543	100-544	100-545	100-546	100-547

Length (M)	White	Black	Pink	Orange	Violet
0.3	101-135	101-136	101-137	101-138	101-139
0.5	100-224	100-225	100-226	100-227	100-228
1	100-238	100-239	100-240	100-241	100-242
1.5	101-145	101-146	101-147	101-148	101-149
2	100-244	100-245	100-246	100-247	100-248
3	100-250	100-251	100-252	100-253	100-254
5	100-256	100-257	100-258	100-259	100-260

Alternative lengths and colours are available subject to minimum order quantities and lead times.

Excel Category 6_A Lockable S/FTP LS0H – Patch Leads Booted



Excel Category 6_A S/FTP Lockable patch leads are manufactured and tested to ISO 11801, EN 50173 & TIA/EIA 568 requirements for patch cord assemblies and provide optimum performance levels for structured cabling installations. Excel Category 6_A S/FTP Lockable patch leads provide added security, preventing unwanted disconnection on secure or sensitive circuits. Disconnection can only be achieved by using the key which is supplied separately to the Patch Leads

Features

- Secure - Prevents Unwanted Disconnection
- Screened braid outer with individual screened foil
- Keys Sold Separately
- Category 6_A Compliant
- Backward Compatible
- Independently verified
- T568B wiring
- LS0H outer sheath
- Individually bagged
- 25 Year System Warranty Available

Description	Part Number
Excel Category 6 _A S/FTP LS0H 0.5m Lockable Booted Patch Lead – Grey	101-120
Excel Category 6 _A S/FTP LS0H 1m Lockable Booted Patch Lead – Grey	101-122
Excel Category 6 _A S/FTP LS0H 2m Lockable Booted Patch Lead – Grey	101-124
Excel Category 6 _A S/FTP LS0H 3m Lockable Booted Patch Lead – Grey	101-126
Excel Category 6 _A S/FTP LS0H 5m Lockable Booted Patch Lead – Grey	101-128
Excel key for lockable Patch Leads (Pair)	101-LCKEY

Excel Category 6_A High Density S/FTP LS0H – Patch Leads Booted



Excel Category 6_A S/FTP High Density patch leads are manufactured and tested to ISO 11801, EN 50173 & TIA/EIA 568 requirements for patch cord assemblies and provide optimum performance levels for structured cabling installations. Plugging and un-plugging is achieved through the unique push-pull design of the RJ45 connector and the use of a special tool (available separately) which extends the grip and removes the necessity to release the connector with the fingers.

Features

- Suitable for High Density Switches and Panels
- Screened braid outer with individual screened foil
- Release Tools Sold Separately
- Category 6_A Compliant
- Backward Compatible
- Independently verified
- T568B wiring
- Blade style 'slimline' moulded strain relief boot with clip protector
- LS0H outer sheath
- Individually bagged
- 25 Year System Warranty Available

Description	Part Number
Excel Category 6 _A S/FTP LS0H 0.5m High Density Booted Patch Lead – Grey	102-150
Excel Category 6 _A S/FTP LS0H 1m High Density Booted Patch Lead – Grey	102-152
Excel Category 6 _A S/FTP LS0H 2m High Density Booted Patch Lead – Grey	102-154
Excel Category 6 _A S/FTP LS0H 3m High Density Booted Patch Lead – Grey	102-156
Excel Category 6 _A S/FTP LS0H 5m High Density Booted Patch Lead – Grey	102-158
Excel Release Tool for High Density Patch Leads (Pair)	102-HDTOOL

Excel Category 6_A Screened S/FTP LS0H Patch Leads Blade Booted

Excel Category 6_A (Augmented Category 6) patch leads take the performance capabilities of copper infrastructure to new levels. Designed to the current ISO and EIA/TIA standards for Class Ea augmented Category 6_A performance these products are intended to deliver reliable, high network performance including support of emerging applications such as 10GBase-T, 10 Gigabit Ethernet. Each Excel Category 6_A patch leads consists of 4 twisted pairs of stranded copper wires, an aluminium/polyester foil tape provides an individual screen for each pair. These pairs are then cabled together, with different lay lengths to ensure optimum performance.



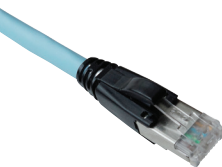
Features

- Suitable for 10 Gigabit, 10GBase-T, Ethernet application
- Screened braid outer with individual foil screen
- LS0H outer sheath

NEW
excel

Description	Part Number
Category 6 _A Solid Core S/FTP LS0H Blade Booted Patch Lead Grey - 1m	100-112
Category 6 _A Solid Core S/FTP LS0H Blade Booted Patch Lead Grey - 2m	100-113

Excel Category 6_A HD Solid Core U/FTP Leads

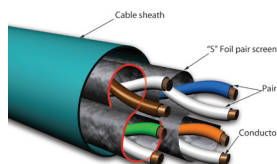


Excel Category 6_A HD Solid Core U/FTP Screened Harness/Switch Link Leads are constructed from 100-191 Excel Category 6_A U/FTP "S" Foil Screened cable (horizontal cable). Each of these leads allows the construction of two Switch/Harness Links or Consolidation Point (CP) Cables. The lead is manufactured with a high performance screened RJ-45 plug on each end permitting the lead to be cut into two at the required lengths. Slimline blade strain relief boots are fitted to protect the latch and allow connection to the highest density equipment. Using the same cable as the horizontal elements of the channel assures performance and does not "use up" the stranded patch lead allowance.

These leads are for the creation of Switch/Harness Links and CP cables. They are not for use as a replacement for patch leads.

Features

- Solid Core Cable
- For Switch/Harness Links and CP Cables
- U/FTP Screened Cable
- LS0H Cable Sheath
- Constructed from Excel 100-191 U/FTP "S" Foil Cable
- 25 Year System Warranty Available
- Cca Euroclass = Cca s1a d1 a1
- Dca Euroclass = Dca s2 d2 a1



Description	Part Number
Category 6 _A HD Solid Core U/FTP Cca Lead Blue - 5m	170-143
Category 6 _A HD Solid Core U/FTP Cca Lead Blue - 10m	170-145
Category 6 _A HD Solid Core U/FTP Cca Lead Blue - 20m	170-123
Category 6 _A HD Solid Core U/FTP Dca Lead Blue - 10m	100-145
Category 6 _A HD Solid Core U/FTP Dca Lead Blue - 20m	100-146
Category 6 _A HD Solid Core U/FTP Dca Lead Blue - 30m	100-124

Please check with your local Excel Sales Office or distributor for in country product availability

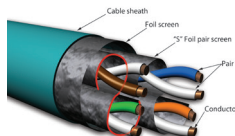
Excel Category 6_A Solid Core F/FTP Screened Harness/Switch Link Leads

Excel Category 6_A Solid Core F/FTP Screened Harness/Switch Link Leads are constructed from 100-196 Excel Category 6_A F/FTP "S" Foil Screened cable (horizontal cable). Each of these leads allows the construction of two Switch/Harness Links or Consolidation Point (CP) Cables. The lead is manufactured with a high performance screened RJ-45 plug on each end permitting the lead to be cut into two at the required lengths. Slimline blade strain relief boots are fitted to protect the latch and allow connection to the highest density equipment. Using the same cable as the horizontal elements of the channel assures performance and does not "use up" the stranded patch lead allowance.

These leads are for the creation of Switch/Harness Links and CP cables. They are not for use as a replacement for patch leads.

Features

- Solid Core Cable
- For Switch/Harness Links and CP Cables
- F/FTP Screened Cable
- LS0H Cable Sheath
- Constructed from Excel 100-196 F/FTP "S" Foil Cable
- 25 Year System Warranty Available
- Cca Euroclass = Cca s1a d1 a1
- Dca Euroclass = Dca s1a d1 a1



Description	Part Number
Category 6 _A Solid Core F/FTP Screened Harness/Switch Link Leads Cca LS0H - 10m	170-130
Category 6 _A Solid Core F/FTP Screened Harness/Switch Link Leads Cca LS0H - 15m	170-131
Category 6 _A Solid Core F/FTP Screened Harness/Switch Link Leads Cca LS0H - 20m	170-132
Category 6 _A Solid Core F/FTP Screened Harness/Switch Link Leads Cca LS0H - 30m	170-133
Category 6 _A Solid Core F/FTP Screened Harness/Switch Link Leads Dca LS0H - 10m	100-130
Category 6 _A Solid Core F/FTP Screened Harness/Switch Link Leads Dca LS0H - 15m	100-131
Category 6 _A Solid Core F/FTP Screened Harness/Switch Link Leads Dca LS0H - 20m	100-132
Category 6 _A Solid Core F/FTP Screened Harness/Switch Link Leads Dca LS0H - 30m	100-133

Excel Category 6_A Device Protection Adapter (DPA)

The Excel Device Protection Adapter (DPA) offers users and network administrators an easy way to protect expensive and mobile IT equipment with LAN access from damage. If the mobile IT equipment is moved in a bigger radius than the connected RJ45 cable allows, the DPA disconnects the connection when a certain pull-out force is reached. This prevents damage of the expensive boards of the IT equipment such as damaged contacts or complete loss of RJ45 jacks for the network connection. Therefore, an expensive repair is a thing of the past.

Features

- Helps prevent damage



Description	Part Number
Excel Category 6 _A Device Protection Adapter	100-925

Excel Unloaded Keystone Jack Modular Patch Panel



The Excel Keystone Jack 16 port or 24 port 1U empty patch panel frames allow for flexible port density from 1 through to 24 ports. The panels are compatible with Excel Category 5e, Category 6 and Category 6_A keystone jacks and come complete with a rear management bar, which can be fitted quickly without the need for tooling or fixings.

The Excel Keystone Jack patch panel frame offers flexibility either through part loading to suit the installations and manage cost, or for pre-terminated requirements, allowing terminated jacks to be snapped into place quickly and easily.

Features

- Supplied unloaded
- Available in chrome or black
- Compatible with Category 5e, 6 and 6_A Excel standard and Toolless Jacks
- Supplied with cage nuts, earth cable and rear management tray
- Load from 1 to 24 Keystone in 1U of rack space

Description	Part Number
Unloaded 16 port Black Patch Panel Frame - Plastic Fascia	100-025
Unloaded 24 port Black Patch Panel Frame - Plastic Fascia	100-026
Unloaded 16 port Chrome Patch Panel Frame	100-027
Unloaded 24 port Chrome Patch Panel Frame	100-028
Compatible Modules	
Category 6 _A Screened Keystone Jack, Butterfly Style, Toolless	100-180
Category 6 _A Low Profile Screened Toolless Jack - Chrome	100-181
Category 6 _A Low Profile Unscreened Toolless Jack - White	100-182-WT
Category 6 _A Low Profile Unscreened Toolless Jack - Black	100-182-BK
Category 6 _A Unscreened Jack - White	100-156
Category 6 _A Unscreened Jack - Black	100-156-BK
Category 6 _A FTP 180 Degree Keystone Through Coupler	100-107
Category 6 Screened Butterfly Style Toolless Keystone Jack	100-210
Category 6 Low Profile Unscreened Butterfly Style Toolless Keystone Jack - White	100-215-WT
Category 6 Low Profile Unscreened Butterfly Style Toolless Keystone Jack - Black	100-215-BK
Category 6 RJ45 White Unscreened Keystone Jack	100-011
Category 6 RJ45 Black Unscreened Keystone Jack	100-011-BK
Category 6 FTP 180 Degree Keystone Through Coupler	100-106
Category 5e Screened Butterfly Style Toolless Keystone Jack	100-906
Category 5e Low Profile Unscreened Butterfly Style Toolless Keystone Jack - White	100-202-WT
Category 5e Low Profile Unscreened Butterfly Style Toolless Keystone Jack - Black	100-202-BK
Category 5e RJ45 White Unscreened Keystone Jack	100-010
Category 5e RJ45 Black Unscreened Keystone Jack	100-010-BK
Keystone Blanks (24-pack) - Black	100-187-BK
Keystone Blanks (24-pack) - White	100-187-WT

Excel Angled Keystone Jack Patch Panel Frames – Unloaded

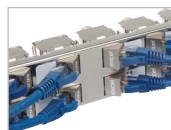
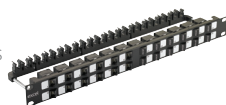
The Angled Keystone Jack Patch Panel Frame is available to support a range of screened and unscreened jacks. It accepts the innovative Excel Angled Toolless Keystone Jack range available in Category 6 & 6_A variants to deliver solution options. The angled jack directs the cable to one side which reduces the bend on the patch cable. This, in turn, reduces the space required between the front of the patch panel and the cabinet doors. The angled nose piece of the jack achieves this while maintaining a conventional flat panel format.

The patch panel, combined with the Angled Toolless Keystone Jacks, maintains cable entry perpendicular to the rear of the panel via the integrated cable manager. This allows the cable management at the rear of the panel to be installed in a way to suit numerous methods – 24 left or 24 right or a mix of left and right. It also means part filled panels can easily be added to.

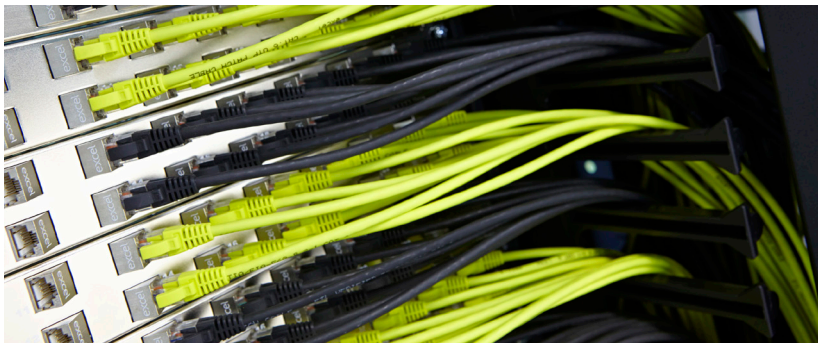
The Chrome finish patch panel comes complete with an earth bonding kit and is suitable for installation of screened and unscreened jacks.

Features

- Supplied unloaded
- Choice of colour – Black & Chrome finish
- 24 Port modular design ideal for standard and pre-terminated installations
- Uniform cable termination – added flexibility of cable entry with supplied cable manager
- Supports Unscreened & Screened – Cat 6 & Cat 6_A – Angled Keystone Toolless jacks
- Supplied with cage nuts and screw fixings
- Earth kit supplied with chrome model



Description	Part Number
Unloaded 24 Port Black Angled Keystone Frame	100-023
Unloaded 24 Port Chrome Angled Keystone Frame	100-024
Compatible Modules	
Category 6 _A Screened Butterfly Style Toolless Angled Jack - Chrome	100-185
Category 6 Unscreened Butterfly Style Toolless Angled Jack - Black	100-213



Excel Keystone V Patch Panel Frame



The Excel 24 Port 1U Keystone V Patch Panel allows standard keystone jacks to be presented in an angled patch panel configuration. The patch panel is designed to accept all of the Excel unscreened and screened standard keystone jacks from the Category 5e, 6 & 6_A portfolios. This panel includes a rear cable manager to allow the cable to be dressed into the panel neatly and securely. The V shape of the panel presents the jacks at an angle to the front of the cabinet that reduces the strain on the jack that results from the patch lead. The patch lead is naturally routed to the cabinet/frame cable management reducing the requirement for rack mounted cable management bars. Earth bonding leads are supplied fitted to enable grounding if required.

Features

- Compatible with Excel Category 5e, 6 & 6_A Screened and Unscreened Keystone Jacks
- Supplied with earthing kit
- Ideal for standard and pre-terminated installations
- Angled "V" Shape Patch Panel
- Option to part or fully load
- Supplied with snap on rear management tray



Description	Part Number
24 port Keystone V Patch Panel Frame, Black	100-040
Vertical Plastic Hoops 65mm - Pack of 2	100-048
Compatible Modules	
Category 6 _A Low Profile Screened Butterfly Style Toolless Jack	100-181
Category 6 _A Low Profile Unscreened Toolless Keystone Jack - White	100-182-WT
Category 6 _A Low Profile Unscreened Toolless Keystone Jack - Black	100-182-BK
Category 6 Screened Butterfly Style Toolless Keystone Jack	100-210
Category 6 RJ45 White Unscreened Keystone Jack	100-011
Category 6 RJ45 Black Unscreened Keystone Jack	100-011-BK
Category 6 Low Profile Unscreened Butterfly Style Toolless Keystone Jack - White	100-215-WT
Category 6 Low Profile Unscreened Butterfly Style Toolless Keystone Jack - Black	100-215-BK
Category 5e Screened Butterfly Style Toolless Keystone Jack	100-906
Category 6 _A Unscreened Jack White	100-156
Category 6 _A Unscreened Jack Black	100-156-BK
Category 5e RJ45 White Unscreened Keystone Jack	100-010
Category 5e RJ45 Black Unscreened Keystone Jack	100-010-BK
Category 5e Low Profile Unscreened Butterfly Style Toolless Keystone Jack - White	100-202-WT
Category 5e Low Profile Unscreened Butterfly Style Toolless Keystone Jack - Black	100-202-BK

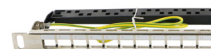
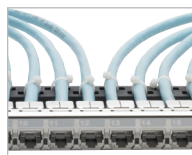
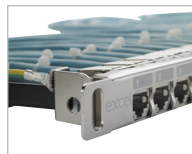
Excel Unloaded Keystone Jack Modular Patch Panel, 0.5U

The Excel 24 Port 0.5U Keystone Patch Panel delivers a high density offering with the benefit of a single row of keystone jacks. The single row of jacks means that the installation is straight forward and allows an individual jack to be removed if required. As the panel is only 0.5U in height it allows, by using two panels together, the ability to present 48 keystone jacks in 1U of rack space. Using two 0.5U panels ensures that the jacks are all aligned the correct way up. Most 48 Port 1U panels require the bottom row of jacks to be mounted upside down.

Features

- High Density - 24 Jacks 0.5U
- Ideal for standard and pre-terminated installations
- Supplied with earthing kit
- Compatible with Excel Category 5e, 6 & 6_A Jacks
- Option to part or fully load
- Supplied with cable management bar

Description	Part Number
24 port Keystone Patch Panel Frame, 0.5U	100-041
Compatible Modules	
Category 6 _A Low Profile Screened Toolless Jack - Chrome	100-181
Category 6 _A Low Profile Unscreened Toolless Keystone Jack - White	100-182-WT
Category 6 _A Low Profile Unscreened Toolless Keystone Jack - Black	100-182-BK
Category 6 RJ45 White Unscreened Keystone Jack	100-011
Category 6 RJ45 Black Unscreened Keystone Jack	100-011-BK
Category 6 Low Profile Unscreened Butterfly Style Toolless Keystone Jack - White	100-215-WT
Category 6 Low Profile Unscreened Butterfly Style Toolless Keystone Jack - Black	100-215-BK
Category 5e RJ45 White Unscreened Keystone Jack	100-010
Category 5e RJ45 Black Unscreened Keystone Jack	100-010-BK
Category 5e Low Profile Unscreened Butterfly Style Toolless Keystone Jack - White	100-202-WT
Category 5e Low Profile Unscreened Butterfly Style Toolless Keystone Jack - Black	100-202-BK



Please check with your local Excel Sales Office or distributor for in country product availability

Excel Unloaded Keystone Jack Modular Patch Panel



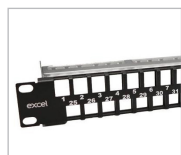
The Excel keystone 48 port 1U keystone patch panel delivers a high density offering with the benefit of 48 ports within 1U of rack space. The empty keystone patch panels are compatible with both screened and unscreened Excel Category 5e, Category 6 and Category 6_A keystone jacks.

A rear management tray with purposely designed cable tie positions, is supplied with each panel which is fitted without the need for any tools or fixings by simply snapping it into place.

The Excel Keystone Jack patch panel frame offers flexibility either through part loading to suit the installations and manage cost or pre-terminated requirements, allowing terminated jacks to be snapped into place quickly and easily.

Features

- High Density - 48 Jacks in 1U
- Supplied unloaded
- Available in chrome or black
- Compatible with Category 5e, 6 and 6_A Excel Keystone Jacks
- Supplied with earthing kit, cage nuts and mini cable ties
- Fast fit rear cable management



NEW
excel

Description	Part Number
Unloaded 48 port Chrome STP Patch Panel Frame	100-042
Unloaded 48 port Black UTP Patch Panel Frame	100-050
Compatible Modules	
Category 6 _A Low Profile Screened Butterfly Style Toolless Jack - Chrome	100-181
Category 6 _A Low Profile Unscreened Butterfly Style Toolless Keystone Jack - White	100-182-WT
Category 6 _A Low Profile Unscreened Butterfly Style Toolless Keystone Jack - Black	100-182-BK
Category 6 _A Low Profile Screened Shuttered Butterfly Style Toolless Jack - Chrome	100-184-24
Category 6 Low Profile Unscreened Butterfly Style Toolless Keystone Jack - White	100-215-WT
Category 6 Low Profile Unscreened Butterfly Style Toolless Keystone Jack - Black	100-215-BK
Category 6 _A Low Profile Screened Butterfly Style Toolless Jack - Chrome	100-181-24
Category 5e Low Profile Unscreened Butterfly Style Toolless Keystone Jack - White	100-202-WT
Category 5e Low Profile Unscreened Butterfly Style Toolless Keystone Jack - Black	100-202-BK

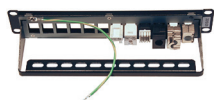
Please check with your local Excel Sales Office or distributor for in country product availability

Excel 10" Keystone Patch Panel - Empty

Excel 1U 10" Keystone Patch Panel provides the mounting facility for up to 12 Excel Keystone Jacks. The modular design accommodates jacks of Category 5e, 6 & 6_A and allows for part panels to be installed. This patch panel may be used in either a screened or unscreened structured cabling system and is supplied complete with a fitted earth bonding wire. Cage nuts and screws are supplied for fitting.

Features

- Accepts Excel Keystone Jacks
- Suitable for Unscreened & Screened jacks
- Supplied with earth bonding lead fitted
- Maximum 12 keystone jacks
- 1U High
- Category 5e, 6 & 6_A



Description	Part Number
10" 12 Port Keystone Patch Panel Black	100-753
Compatible Keystone Jacks	
Category 6 _A Shuttered Low Profile Screened Keystone Jack - Toolless - Pack of 24	100-184-24
Category 6 _A Low Profile Screened Keystone Jack - Toolless	100-181
Category 6 _A Low Profile Screened Keystone Jack - Toolless - Pack of 24	100-181-24
Category 6 _A Screened Keystone Jack, Butterfly Style - Toolless	100-180
Category 6 Unscreened U/UTP Toolless Keystone Jack, Butterfly Style - White	100-211
Category 6 Unscreened U/UTP Toolless Keystone Jack, Butterfly Style - Black	100-212
Category 6 Screened Toolless Jack - Butterfly Style	100-210
Category 6 Unscreened (UTP) Keystone Jack - White	100-011
Category 6 Unscreened (UTP) Keystone Jack - Black	100-011-BK
Category 5e Screened Butterfly Style Toolless Keystone Jack	100-906
Excel Plus Category 5e Keystone Jack, RJ45 - White	100-010
Excel Plus Category 5e Keystone Jack, RJ45 - Black	100-010-BK

Please check with your local Excel Sales Office or distributor for in country product availability

Excel ExpressNet Patch Panel Frames



The Excel ExpressNet Panel accepts either and/or both copper and fibre modules. The ability to have fibre and copper presented in one panel offers flexibility in the installation, reduces required rack space and provides future proofing in system design. Useful in the extremes of installations from data centres where the ExpressNet Panel may aid separation of the routes of cabling, to a remote wall box that has a small number of fibre and copper links, the ExpressNet Panel will suit any environment. The construction of the panel has a chrome colour finish and may be used for either screened or unscreened copper cabling and LC or MTP fibre connectivity.

A 4 or 8 module ExpressNet Panel is available, both using 1U of rack space.

Features

- 4 & 8 Module Capacity Patch Panel Frames
- Accepts Copper & Fibre Modules
- 1U of Rack Space
- Toolless assembly and module fitting

Description	Part Number
Excel 1U ExpressNet Patch Panel Frames - 4 Module - Unloaded	100-230
Excel 1U ExpressNet Patch Panel Frames - 8 Module - Unloaded	100-231
Excel Blank for Mixed Use Panel - Black - Pack of 5	100-232
Compatible Modules	
Excel 6 Port Category 6 Unscreened ExpressNet Module	100-235
Excel 6 Port Category 6 Screened ExpressNet Module	100-236
Excel 6 _A Port Category 6 Screened ExpressNet Module	100-237
Excel 6 Port Duplex (12 Fibre) OM3 LC to MTP ExpressNet Module	201-610
Excel 6 Port Duplex (12 Fibre) OM4 LC to MTP ExpressNet Module	201-611
Excel 6 Port Duplex (12 Fibre) OS2 LC to MTP ExpressNet Module	201-612
Excel 6 Port Duplex (12 Fibre) OM3 LC ExpressNet Module	201-600
Excel 6 Port Duplex (12 Fibre) OM4 LC ExpressNet Module	201-601
Excel 6 Port Duplex (12 Fibre) OS2 LC ExpressNet Module	201-602
Excel 4 Port MTP Singlemode APC ExpressNet Module	201-603
Excel 4 Port MTP Multimode ExpressNet Module	201-604

Excel Category 6_A Unscreened Keystone Jack

The Excel Category 6_A Unscreened Keystone Jack, is a RJ45 Keystone Jack suitable for mounting in a range of housings from patch panels, faceplates and shutters to sub floor boxes, and work area distribution enclosures. The socket itself is housed in a high quality ABS plastic housing, which opens at the rear to reveal the IDC termination points. A choice of patch panel frames with either 16 or 24 port density in both black and chrome are available.

Features

- IDC point at 180° to jack
- Suitable for patch panel and faceplate mounting
- EC verified
- UL 1863 Safety Listed
- UL94V-0 fire retardant plastic
- 25 Year System Warranty Available
- Suitable for 10 Gigabit, 10GBase-T, Ethernet applications

Description	Part Number
Category 6 _A Unscreened Jack White	100-156
Category 6 _A Unscreened Jack Black	100-156-BK
Compatible Patch Panel Frames	
Unloaded 16 port Black Patch Panel Frame - Plastic Fascia	100-025
Unloaded 24 port Black Patch Panel Frame - Plastic Fascia	100-026
Unloaded 24 port Keystone V Patch Panel Frame - Black	100-040
Unloaded 24 port Keystone Jack Modular Patch Panel - 0.5U	100-041
Unloaded 16 port Chrome Patch Panel Frame	100-027
Unloaded 24 port Chrome Patch Panel Frame	100-028

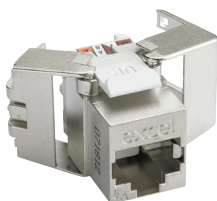
EC verified. This product has been tested by the Delta EC Cabling Group and complies with the following standards - ISO/IEC 11801 2nd edition:2002, ISO/IEC 11801 amendment 2:2010, EN 50173:2007, ANSI/TIA-568-C.2 and IEC 60603-7-41. For copies of test certification please contact your local Excel distributor, or visit www.excel-networking.com or www.delta.dk.



**FACEPLATES
& SHUTTERS**
excel

Turn to page 90 for details

Excel Category 6_A Low Profile Screened Keystone Jack - Toolless



100-181-24



100-184-24



Turn to page 90 for details

The Excel Category 6_A Low Profile Screened Keystone Jack, is a reduced size toolless termination RJ45 socket. The reduced size allows for multiple cable entry directions to be accommodated when this jack is mounted in a standard depth back box. This permits many mounting options including flush shutters at the outlet as well as more common angled shutter used with keystone jacks. A choice of compatible Patch Panel frames with either 16 or 24 port density in both black and chrome are available for this Low Profile Jack. The socket itself is housed in a high quality zinc die cast housing, which opens at the rear in a butterfly manner to reveal the IDC termination points. Once the pairs are arranged in the cable management cap and trimmed it is a simple case of closing the 'butterfly' together to complete the termination.

This popular jack is now available in a pack of 24, thereby removing the use of individual plastic bags, which significantly reduces the installation time as well as helping to save the environment.

Features

- High quality die cast housing
- Low profile design - just 28mm overall depth
- 360° Shielding protects against alien crosstalk
- Toolless termination design
- Supports 10 Gigabit Ethernet application
- 25 Year System Warranty Available
- 3rd Party ISO11081 2nd Edition verification
- Delta 3rd Party Verification includes POE Plus – Testing of mating and un-mating this connector with plus under electrical load
- Available in a pack of 24 removing the need for individual plastic bags
- 100-184-24 comes complete with an integrated shutter to protect against the dust

Description	Part Number
Category 6 _A Low Profile Screened Toolless Jack - Chrome	100-181
Category 6 _A Low Profile Screened Toolless Jack - Chrome - Pack of 24	100-181-24
Category 6 _A Shuttered Low Profile Toolless Jack - Pack of 24	100-184-24
Compatible Patch Panel Frames	
Unloaded 16 port Black Patch Panel Frame - Plastic Fascia	100-025
Unloaded 24 port Black Patch Panel Frame - Plastic Fascia	100-026
Unloaded 16 port Chrome Patch Panel Frame	100-027
Unloaded 24 port Chrome Patch Panel Frame	100-028
Unloaded 24 port Keystone V Patch Panel Frame - Black	100-040
Unloaded 24 port Keystone Jack Modular Patch Panel - 05U	100-041

EC verified. This product has been tested by the Delta EC Cabling Group and complies with the following standards - ISO/IEC 11801 2nd edition:2002, FDAM ISO/IEC 11801 amendment 2:2009, EN 50173:2007, ANSI/TIA-568-C.2, Cat. 6_A and Draft IEC 60603-7-51 (screened). For copies of test certification please contact your local Excel distributor, or visit www.excel-networking.com or www.delta.dk.

Excel Category 6_A Screened Keystone Jack - Toolless

The Excel Category 6_A Screened Keystone Jack, is a toolless termination RJ45 socket suitable for mounting in range of housings from patch panels, faceplates and shutters to sub floor boxes, and work area distribution enclosures. The socket itself is housed in a high quality zinc die cast housing, which opens at the rear in a butterfly manner to reveal the IDC termination points. Once the conductors of the cable to be terminated are fed into a management cap the process is completed by snapping the 'butterfly wings' together with minimal, but firm pressure. A choice of Patch Panel frames with either 16 or 24 port density in both black and chrome are available.

This popular jack is now available in a pack of 24, thereby removing the use of individual plastic bags, which significantly reduces the installation time as well as helping to save the environment.

Features

- High quality die cast housing
- Toolless termination design
- Suitable for patch panel and faceplate mounting
- Suitable for 10 Gigabit Ethernet application
- Suitable for installation in 37mm deep back box with bevelled faceplate
- 25 Year System Warranty Available
- 360° Shielding protects against alien crosstalk
- Delta 3rd party verification includes PoE Plus - Testing of mating and un-mating this connector with plus under electrical load
- Available in a pack of 24 removing the need for individual plastic bags



Description	Part Number
Category 6 _A Screened Keystone Jack, Butterfly Style, Toolless	100-180
Category 6 _A Screened Keystone Jack, Butterfly Style, Toolless - Pack of 24	100-180-24
Compatible Panels	
Unloaded 16 Port Black Patch Panel Frame - Plastic Fascia	100-025
Unloaded 24 Port Black Patch Panel Frame - Plastic Fascia	100-026
Unloaded 16 Port Chrome Patch Panel Frame	100-027
Unloaded 24 Port Chrome Patch Panel Frame	100-028

Excel Category 6_A Low Profile Unscreened Keystone Jack - Toolless



The Excel Category 6_A Low Profile Unscreened Keystone Jack, is a reduced size toolless termination RJ45 socket. The reduced size allows for multiple cable entry directions to be accommodated when this jack is mounted in a standard depth back box. This permits many mounting options including flush shutters at the outlet as well as more common angled shutter used with keystone jacks. A choice of compatible Patch Panel frames with either 16 or 24 port density in both black and chrome are available for this Low Profile Jack. The socket is manufactured from high quality polymer with a die cast metallic "butterfly" style rear closing. Once the pairs are arranged in the cable management cap and trimmed it is a simple case of closing the 'butterfly' together to complete the termination.

Features

- 25 Year System Warranty Available
- Low Profile - 28mm overall depth
- Supports 10 Gigabit Ethernet
- Toolless termination design
- 3rd Party ISO11081 2nd Edition verification



Description	Part Number
Category 6 _A Low Profile Unscreened Toolless Keystone Jack - White	100-182-WT
Category 6 _A Low Profile Unscreened Toolless Keystone Jack - Black	100-182-BK
Compatible Panels	
Unloaded 16 Port Black Patch Panel Frame - Plastic Fascia	100-025
Unloaded 24 Port Black Patch Panel Frame - Plastic Fascia	100-026
Unloaded 16 Port Chrome Patch Panel Frame	100-027
Unloaded 24 Port Chrome Patch Panel Frame	100-028

EC verified. This product has been tested by DELTA EC Cabling Group and complies with the electrical requirements of the above specified standards and "Terms and conditions for the EC VERIFIED programme for Generic and Coaxial Cabling", DQP231006. The testing included measurement of NEXT with a compliant test plug and calculation of all the 14 test cases in both measurement directions. For copies of test certification please contact your local Excel distributor, or visit www.excel-networking.com or www.delta.dk.

Excel Category 6_A Screened Angled Keystone Jack – Toolless

The Excel Category 6_A screened angled Keystone Jack, is a toolless termination RJ45 socket suitable for mounting in patch panels. The angled design of the socket face makes this product ideal for high density frames. Traditional horizontal patch cable management bars can be removed or reduced in number as the leads follow a natural route to the left or right of the panel and the cabinets vertical management. To the rear of the socket the design is exactly the same as the excel keystone range, enabling standard termination and cable dressing practices to be followed. The socket itself is housed in a high quality zinc die cast housing, which opens a the rear in a butterfly manner to reveal the IDC termination points. Once the conductors of the cable to be terminated are fed into a management cap the process is completed by snapping the 'butterfly wings' together with minimal, but firm pressure. Patch Panel frames with 24 port density in both black and chrome are available.

This popular jack is now available in a pack of 24, thereby removing the use of individual plastic bags, which significantly reduces the installation time as well as helping to save the environment.

Features

- High quality die cast housing
- Toolless termination design
- Suitable for patch panel mounting
- Suitable for 10 Gigabit Ethernet application
- Ideal for high density cabling installations
- 25 Year System Warranty Available
- 360° Shielding protects against alien crosstalk
- Angled design assists patch cable management
- Delta 3rd Party Verification includes PoE Plus - Testing of mating and un-mating this connector with plus under electrical load
- Available in a pack of 24 removing the need for individual plastic bags



Description	Part Number
Category 6 _A Screened Butterfly Style Toolless Angled Jack - Chrome	100-185
Category 6 _A Screened Butterfly Style Toolless Angled Jack - Chrome - Pack of 24	100-185-24
Compatible Patch Panel Frames	
Unloaded 24 Port Chrome Angled Keystone Frame	100-024
Unloaded 24 Port Black Angled Keystone Frame	100-023

EC verified. This product has been tested by the Delta EC Cabling Group and complies with the following standards - ISO/IEC 11801 2nd edition:2002, ISO/IEC 11801 amendment 2:2010, EN 50173:2007, ANSI/TIA-568-C.2 and IEC 60603-7-51 (screened). For copies of test certification please contact your local Excel distributor, or visit www.excel-networking.com or www.delta.dk.

Excel Category 6_A (FTP) Field Termination RJ45 Plug



The Excel Screened Field Termination RJ45 Plug offers easy, toolless termination and complies fully with ISO/IEC 11801, Category 6_A and ANSI/TIA-568-C.2 standards. It offers a fully shielded die-cast zinc alloy, nickel plated body and gold plated phosphor bronze contact pins. Suitable for cable diameters between 6 and 8mm, strain relief is provided by the compression nut on the back of the connector. IDC termination accepts wire gauges from 23 to 26AWG.

Features

- Fully screened Category 6_A
- Die-cast zinc alloy construction
- Toolless - easy termination
- Supports 10 Gigabit Ethernet
- Independently verified
- Can be re-terminated numerous times



Description	Part Number
Excel Category 6 _A FTP Field Termination RJ45 Plug	100-140

Excel Category 6_A (FTP) Keystone Through Coupler



The Excel Category 6_A 'Through Coupler' provides RJ45 in/out connections, allowing channels to be extended where required. With its standard keystone Jack profile they fit all Keystone panels and outlets.

Features

- Standard Keystone fitting
- Category 6_A FTP
- 180 degree configuration
- Standard RJ45 connection both ends
- Suitable for both screened and unscreened systems
- Maintains channel performance

Description	Part Number
Excel Category 6 _A FTP 180 Degree Keystone Through Coupler	100-107

Excel Category 6_A FTP IDC Junction Box

IDC junction box suitable for Category 6_A cable joints, repairs and extensions. Fully screened. Includes IDC connection for the drain wire. Housing is metal plated to provide further screening. Ideal for use where repairs or extensions are required.

Features

- Suitable for Category 6_A
- Suitable for screened and unscreened cables
- Can be used as through coupler
- Drain wire IDC connection
- Metal plated

Description	Part Number
Excel Category 6 _A FTP IDC Junction Box	100-111



Excel 6 Port Category 6_A Screened ExpressNet Module

Excel 6 Port Screened Category 6_A Modules offer a flexible and quick way to terminate and install structured cabling. Manufactured from die cast metal the modules use IDC punch downs for the termination of the copper cables. The incoming cables are secured in place with clamps that bond the screen to the module. The design of the module ensures that screening is provided between ports. After termination the module is simply fitted to one of the compatible Excel ExpressNet Patch Panels permitting different categories of Fibre and Copper to be presented on the same panel. The modules are easily fitted and removed from the rear of the patch panel by activating release latches. The Excel Screened Category 6_A ExpressNet Module has been independently verified by Delta confirming component level performance of the product.

Features

- 6 Port Screened Module
- Cables entering module are individually secured
- 4 & 8 Module Patch Panel Frames
- Delta Third Party Verified - Component Level
- Compatible with Excel ExpressNet Panel
- 25 Year System Warranty Available

Description	Part Number
6 Port Category 6 _A Screened ExpressNet Module	100-237
Compatible Patch Panel Frames	
ExpressNet Panel - 4 Module - Empty	100-230
ExpressNet Panel - 8 Module - Empty	100-231



Excel Category 6 Unscreened Twisted Pair (U/UTP) Cable - LS0H



Excel Category 6 U/UTP cable is designed for optimal support of High-Speed data protocols delivering 1 Gbps performance to the workstation. Designed to be quick and easy to install the cable requires no specialist installation tools and is supplied in reelex packaging for fast, snag free installation. To reduce wastage the cable sheath is numbered from 305 metre to 1 metre, allowing quick and easy calculation of the cable remaining in the box. The inclusion of a polyethylene cross filler ensures optimum cross talk performance.

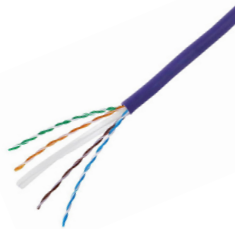
Features

- 305 to 0 metre marking helps to reduce waste
- 305 metre reelex packaging or 500m drum
- 23AWG conductor
- LS0H outer sheath
- 6.2mm outside diameter
- EC Verified
- 25 Year System Warranty Available
- B2ca Euroclass = B2ca s1a da a1
- Dca Euroclass = Dca s2 d2 a1

Description	Part Number
Category 6 U/UTP 23AWG B2ca LS0H Cable Violet – 305m	190-071
Category 6 U/UTP 24AWG B2ca LS0H Cable Violet – 305m	190-071-305m
Category 6 U/UTP 23AWG B2ca LS0H Cable Violet – 500m	190-071-500
Category 6 U/UTP B2ca LS0H Cable White – 305m	190-074
Category 6 U/UTP B2ca LS0H Cable Orange – 305m	190-075
Category 6 U/UTP Dca LS0H Cable Violet – 305m	100-071
Category 6 U/UTP Dca LS0H Cable Violet - 500m drum	100-071-500m
Category 6 U/UTP Dca LS0H Cable Violet - 1000m reel	100-071-1000M
Category 6 U/UTP Dca LS0H Cable Green – 305m	100-072
Category 6 U/UTP Dca LS0H Cable White – 305m	100-074
Category 6 U/UTP Dca LS0H Cable White – 1000m reel	100-074-1000M
Category 6 U/UTP Dca LS0H Cable Orange – 305m	100-075

Excel Category 6 Unscreened U/UTP 24AWG Cable

Excel Category 6 U/UTP cables are manufactured and tested to the TIA/EIA 568-B.2-1, EN50173-1 and ISO/ IEC 11801 Category 6 specifications. Each cable consists of 8 colour coded 24AWG polyethylene insulated conductors. These are twisted together to form 4 pairs with varying lay lengths. These pairs are then formed around a central 'X' shaped polyethylene filler. This filler assists in maintaining and enhancing the cables performance. The printing detail along the outer sheath includes the cable part code, specification detail and our 305 to 0 metre marking system. As the cable is dispensed from the box the sequential marking counts down from 305 to 0 metres, as well as reducing waste and accounting easily for cables installed, this innovative print legend finally removes the guesswork from assessing the amount of cable remaining in partly used boxes.



Features

- TIA-568-C.2-2009
- EN50173-1
- ISO/IEC 11801 EC Verified Category 6 compliant
- Choice of PVC or LSOH Outer Sheath
- Central X Filler
- 6.0mm (100-069) and 5.4mm (100-080) Overall Outside Diameter
- 24AWG conductor
- Fast Feed Reelex Packaging
- 25 Year System Warranty Available

Description	Part Number
Category 6 Unscreened U/UTP 24AWG Dca LSOH Cable - Violet	100-080
Category 6 Unscreened U/UTP 24AWG Dca LSOH Cable - White	100-080-WT

Excel Dual Category 6 Unscreened Twisted Pair (U/UTP) Cable



Excel Category 6 U/UTP cable is designed for optimal support of High-Speed data protocols delivering 1 Gbps performance to the workstation. Designed to be quick and easy to install the cable requires no specialist installation tools and is supplied in reelex packaging for fast, snag free installation. To reduce wastage each cable is numbered from 500 metre to 1 metre, allowing quick and easy calculation of the cable remaining in the box. The inclusion of a polyethylene cross filler ensures optimum cross talk performance.

Features

- 500 to 0 metre marking helps to reduce waste
- 500 metre reelex packaging
- 23AWG conductor
- 25 Year System Warranty Available
- Dca Euroclass = Dca s2 d2 a1

Description	Part Number
Dual Category 6 Dca L50H Cable White - 500m	100-103

Excel Category 6 Unscreened Twisted Pair (U/UTP) - External Grade (PE)



Excel Category 6 U/UTP cable is designed for optimal support of high-speed data protocols delivery 1Gbps performance to the workstation. The cable comes with a black polyethylene outer sheath, for outdoor use.

Designed to be quick and easy to install the cable requires no specialist installation tools and is supplied in reelex packaging for fast, snag free installation. To reduce wastage the cable sheath is numbered from 305 metre to 1 metre, allowing quick and easy calculation of the cable remaining in the box.

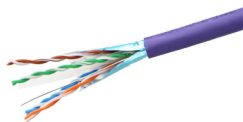
Features

- 305 to 0 metre marking helps reduce waste
- 305 metre reelex packaging
- 25 Year System Warranty Available

Description	Part Number
Category 6 External Grade Fca Cable Black	100-100

Excel Category 6 Screened Twisted Pair (F/UTP) Cable

Excel Category 6 F/UTP cable is designed to provide high bandwidth for LAN and Data Centre applications. Made with a flexible Low Smoke Zero Halogen sheath, the Excel Category 6 F/UTP has a 100% aluminium foil shield to minimise interference and reduce background noise.



Features

- Enhanced performance
- 25 Year System Warranty Available
- Performance matched to Excel Category 6 connecting hardware
- B2ca Euroclass = B2ca s1a d1 a1
- Dca Euroclass = Dca s2 d2 a2



Description	Part Number
Category 6 B2ca LS0H Cable Violet - 305m	190-076
Category 6 B2ca LS0H Cable Light Green - 305m	190-076-305M-GN
Category 6 B2ca LS0H Cable Light Green - 500m	190-076/LTGN-500
Category 6 Dca LS0H Cable Violet - 305m	100-076
Category 6 Dca LS0H Cable Light Green - 305m	100-076-305M-GN
Category 6 Dca LS0H Cable Light Green - 500m	100-076/LTGN-500



Please check with your local Excel Sales Office or distributor for in country product availability

Excel Dual Category 6 Screened Twisted Pair (F/UTP) Cable

Excel Category 6 F/UTP cable is designed to provide high bandwidth for LAN and Data Centre applications. Made with a flexible Low Smoke Zero Halogen sheath, the Excel Category 6 F/UTP has a 100% aluminium foil shield to minimise interference and reduce background noise.



Two of these 4 pair units are then extruded together to form a dual 'figure of 8' finished cable. A small web of LS0H compound joins the two 4 pair units together and provides a quick and easy method of separating the cables for termination.

Features

- Category 6 compliant
- 23AWG conductor
- LS0H outer sheath
- Overall foil tape screen
- Central 'X' filler
- '500-0' metre marked
- 2 x 4 pair dual construction
- 25 Year System Warranty Available
- Dca Euroclass = Dca s2 d2 a2



Description	Part Number
Dual Category 6 Cable Dca LS0H, 500 metre drum	100-077/LTGN



Excel Category 6 Unscreened Twisted Pair (U/UTP) – Patch Leads Booted – LS0H

Excel Category 6 stranded conductor 4 pair U/UTP booted blade style 'slimline' patch leads are manufactured from enhanced performance patch cable and RJ45 connectors. Available in a choice of colours.




Length (M)	Grey	Red	Blue	Black
0.3	100-403	100-403-RD	100-403-BU	100-403-BK
0.5	100-395	-	-	-
0.75	100-537	100-695	100-689	
1	100-310	100-315	100-325	100-350
1.5	100-550	100-551	100-552	100-553
2	100-311	100-316	100-326	100-360
3	100-312	100-317	100-327	100-371
4	100-357	100-358	100-364	-
5	100-314	100-319	100-329	100-373
6	100-318	100-323	100-334	-
7	100-414	100-422	-	100-400
8	100-352	-	100-355	-
10	100-335	100-338	100-344	100-401
15	100-336	100-339	100-345	-
20	100-337	100-340	100-346	-



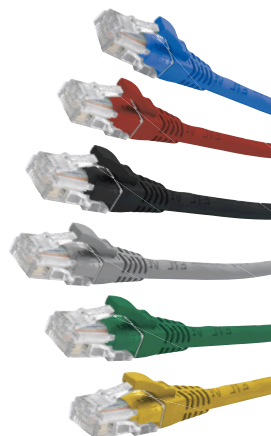
Length (M)	Green	Yellow	White	Violet
0.3	100-403-GN	100-403-YW	100-403-WT	100-403-VT
0.5	-	-	100-415	-
0.75	100-692	100-698		
1	100-320	100-330	100-416	100-387
1.5	100-554	100-555	100-556	100-557
2	100-321	100-331	100-417	100-388
3	100-322	100-332	100-418	100-389
4	100-359	100-365	-	-
5	100-324	100-333	100-419	100-392
6	100-328	100-351	-	-
7	100-424	100-425	100-420	-
8	100-354	100-356	-	-
10	100-341	100-347	100-421	100-390
15	100-342	100-348	-	100-393
20	100-343	100-349	-	100-391

Features

- LSOH outer sheath
- Performance matched to Excel Category 6 connecting hardware
- Choice of colours
- Blade style 'slimline' moulded strain relief boot with clip protector
- 25 Year System Warranty Available



Length (M)	Orange	Pink
0.3	100-403-OR	100-403-PK
0.5	-	-
1	100-426	100-559
1.5	100-558	-
2	100-427	100-560
3	100-428	100-561
4	-	-
5	100-429	100-562
6	100-404	-
7	100-402	-
8	100-499	-
10	100-412	100-563
15	100-431	-
20	100-413	-



ETL - This product range has been tested by ETL and found to comply with ANSI/TIA-568-B.2-1 Category 6, June 2002. For copies of test certification please contact your local Excel distributor, or visit www.excel-networking.com.

Excel Category 6 Unscreened Twisted Pair (U/UTP) – Solid Patch Leads Booted – LS0H



Excel Category 6 solid conductor 4 pair U/UTP booted patch leads are manufactured for use as harness or equipment link cables. Solid cables provide better performance over the longer lengths that this type of application often requires, whilst solid conductors are easier and more suited to IDC termination at the distribution end of the equipment link.

Available in two lengths, the items can be cut in to shorter single ended cables as required.

Features

- Manufactured from Excel independently verified part no. 190-071 or 100-071
- Ideal for equipment and harness links
- LS0H outer sheath
- Blade style 'slimline' moulded strain relief boot with clip protector
- 25 Year System Warranty Available
- B2ca Euroclass = B2ca s1a d1 a1
- Dca Euroclass = Dca s2 d2 a1

Description	Part Number
Category 6 Solid 10m Patch Lead B2ca LS0H - Violet	190-367
Category 6 Solid 15m Patch Lead B2ca LS0H - Violet	190-368
Category 6 Solid 20m Patch Lead B2ca LS0H - Violet	190-369
Category 6 Solid 30m Patch Lead B2ca LS0H - Violet	190-370
Category 6 Solid 10m Patch Lead Dca LS0H - Violet	100-367
Category 6 Solid 15m Patch Lead Dca LS0H - Violet	100-368
Category 6 Solid 20m Patch Lead Dca LS0H - Violet	100-369
Category 6 Solid 30m Patch Lead Dca LS0H - Violet	100-370

Excel Category 6 Lockable U/UTP LS0H – Patch Leads Booted

Excel Category 6 U/UTP Lockable patch leads are manufactured and tested to ISO 11801, EN 50173 & TIA/EIA 568 requirements for patch cord assemblies and provide optimum performance levels for structured cabling installations. Excel Category 6 U/UTP Lockable patch leads provide added security, preventing unwanted disconnection on secure or sensitive circuits. Disconnection can only be achieved by using the key which is supplied separately to the Patch Leads.



Features

- Secure - Prevents Unwanted Disconnection
- Keys Sold Separately
- Category 6 Compliant
- Backward Compatible
- Independently verified
- T568B wiring
- LS0H outer sheath
- Individually bagged
- 25 Year System Warranty Available

Description	Part Number
Excel Category 6 U/UTP LS0H 0.5m Lockable Booted Patch Lead – Grey	101-100
Excel Category 6 U/UTP LS0H 1m Lockable Booted Patch Lead – Grey	101-102
Excel Category 6 U/UTP LS0H 2m Lockable Booted Patch Lead – Grey	101-104
Excel Category 6 U/UTP LS0H 3m Lockable Booted Patch Lead – Grey	101-106
Excel Category 6 U/UTP LS0H 5m Lockable Booted Patch Lead – Grey	101-108
Excel key for lockable Patch Leads (Pair)	101-LCKEY

Excel Category 6 High Density U/UTP LS0H – Patch Leads Booted



Excel Category 6 U/UTP High Density patch leads are manufactured and tested to ISO 11801, EN 50173 & TIA/EIA 568 requirements for patch cord assemblies and provide optimum performance levels for structured cabling installations. Plugging and unplugging is achieved through the unique push-pull design of the RJ45 connector and the use of a special tool (available separately) which extends the grip and removes the necessity to release the connector with the fingers.

Features

- Suitable for High Density Switches and Panels
- Release Tools Sold Separately
- Category 6 Compliant
- Backward Compatible
- Independently verified
- Choice of Colours
- T568B wiring
- Blade style 'slimline' moulded strain relief boot with clip protector
- LS0H outer sheath
- Individually bagged
- 25 Year System Warranty Available

Description	Part Number
Excel Category 6 U/UTP LS0H 0.5m High Density Booted Patch Lead – Grey	102-100
Excel Category 6 U/UTP LS0H 1m High Density Booted Patch Lead – Grey	102-102
Excel Category 6 U/UTP LS0H 2m High Density Booted Patch Lead – Grey	102-104
Excel Category 6 U/UTP LS0H 3m High Density Booted Patch Lead – Grey	102-106
Excel Category 6 U/UTP LS0H 5m High Density Booted Patch Lead – Grey	102-108
Excel Release Tool for High Density Patch Leads (Pair)	102-HDTOOL

Excel Category 6 U/UTP Mini Patch Leads - LS0H

Excel Category 6 U/UTP mini patch leads are manufactured from 28AWG stranded conductors and tested to ISO & EN requirements for patch cord assemblies. Using these Excel patch cords will ensure the installed cabling system is compliant with the TIA/EIA, ISO & EN channel specification requirements and will provide optimum performance levels of your Excel Category 6 cabling.

A choice of lengths and colours are available, colour coded slimline moulded boots are standard and each cable is supplied individually bagged. Each cable has a low smoke zero halogen outer sheath as standard and the small 3.8mm outside diameter makes them ideal for the data centre and high density environments.

Features

- Suitable for High Density Switches and Panels
- 3.8mm outside diameter
- Blade style 'slimline' moulded strain relief boot with clip protector
- LS0H Outer Sheath
- 25 Year System Warranty Available



Length (M)	Grey	White	Blue	Yellow
0.5	100-504	100-513	100-518	100-527
1	100-505	100-514	100-523	100-528
2	100-506	100-515	100-524	100-533
3	100-507	100-516	100-525	100-534
5	100-508	100-517	100-526	100-535

Excel Category 6 Screened Twisted Pair (F/UTP) – Patch Leads Booted



Excel Category 6 Stranded Conductor 4 Pair F/UTP booted patch leads are manufactured from enhanced performance patch cable and RJ45 connectors. Both the outer sheath and boots are LS0H as standard.

Features

- LS0H outer sheath
- Performance matched to Excel Category 6 connecting hardware
- Available in a choice of colours
- Individually bagged
- Blade style 'slimline' moulded strain relief boot with clip protector
- 25 Year System Warranty Available



Length (M)	Grey	Red	Green	Blue	Yellow
0.5	100-456	-	-	-	-
1	100-435	100-438	100-441	100-444	100-447
2	100-457	-	-	-	-
3	100-436	100-439	100-442	100-445	100-448
5	100-437	100-440	100-443	100-446	100-449
7	100-458	-	-	-	-
10	100-459	-	-	-	-

NB. Coloured patch leads are subject to lead times. Please contact the Sales Office for further details.

Excel Category 6 Unscreened RJ45 Patch Panels

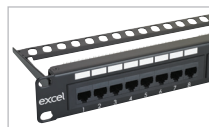
This range of panels have been designed to meet or exceed the latest ISO and TIA requirements for category 6 compliance. When installed with Excel Category 6 cables and outlets full link and channel compliance can also be achieved.

Product design is based around the established Category 5e range and provide quick and easy termination using LSA compatible tooling. Ample cable tie positions are provided per block of 8 outlets, to ensure a neat method for cable management.

Features

- Choice of port density
- 25 Year System Warranty Available
- Cage nuts and 1-96 label kit included
- Integral rear cable management

Description	Part Number
Category 6 24 Port 1U Black Patch Panel	100-304
Category 6 48 Port 2U Black Patch Panel	100-306



Excel Category 6 Unscreened RJ45 Right Angle Patch Panel

Available in 24 or 48 port options the Excel right angled patch panel represents a cost effective category 6 solution with integral rear cable management. Both occupy 1U position and present LSA compatible termination IDCs that are horizontal to the panel facia to allow quick and easy cable installation. The 48 port version uses a double deck design to facilitate two sets of 24 ports to be installed.

Features

- 25 Year System Warranty Available
- Integral rear cable management
- Cage nuts and 1-96 self adhesive label kit included

Description	Part Number
Category 6 24 Port 1U Right Angle Black Patch Panel	100-302
Category 6 48 Port 1U Right Angle Black Patch Panel	100-394



Excel Plus – Category 6 Unscreened RJ45 Patch Panels



The Excel Plus high density patch panel combines the proven quality and performance of the existing range with enhanced aesthetics and labelling system. Each panel consists of a number of 8 way blocks of RJ45 sockets, housed in a high quality plastic moulding. To the front of the panel this moulding contains the new easy to use slide label system. Each block of 8 sockets has its own label which can be removed from either side of the covered label field. The label strip itself is protected by a clear, tough plastic insert.



Features

- Enhanced slide label system
- 25 Year System Warranty Available
- Cage nuts and 1-96 label kit included

Description	Part Number
Category 6 24 Port 1U Black Patch Panel	100-372
Category 6 48 Port 2U Black Patch Panel	100-380

Excel Plus – Category 6 Unscreened RJ45 Modular Patch Panel



The Excel Plus Category 6 modular patch panel is designed around 4 high quality housings each containing 6 x RJ45 outlets, which are snapped in to the 19" frame without the need for tooling of any type. Available either pre-loaded for standard installations which may require the built in modularity for future use or as an unloaded frame and compatible 6 way block.

Purchasing in this way allows maximum design flexibility especially for pre-terminated solutions and smaller installs such as retail where a fully loaded 24 port panel may not be necessary.



Features

- Category 6 Compliant
- Totally modular toolless design
- Snap on toolless rear cable management included as standard
- Option to buy unloaded frame and module for increased flexibility
- 25 Year System Warranty Available



Description	Part Number
4 Way Black Modular Patch Panel Frame	100-016
6 Way Modular Block for use in 100-016	100-017

Excel Category 6 Screened RJ45 Patch Panel

The Excel Category 6 Screened has been designed to meet or exceed the latest ISO and TIA requirements for category 6 compliance. When installed with Excel Category 6 Screened cables and outlets full link and channel compliance can also be achieved.



Features

- Supplied with fixing kit, earth kit and 1-96 self adhesive labelling
- Category 6 compliant
- Built in rear cable management
- Right angled panel
- Suitable for LSA compatible tooling.
- 25 Year System Warranty Available

Description	Part Number
Category 6 24 Port 1U Black Patch Panel	100-013



Excel Category 6 Unscreened RJ45 Module

This range of outlets have been designed to meet or exceed the latest ISO and TIA requirements for category 6 compliance. When installed with Excel Category 6 cables and patch panels full link and channel compliance can also be achieved. These outlets also provide backward compatibility with the Category 5 and 5e systems.

Product design is based around the established Category 5e module and provide quick and easy termination using LSA compatible tooling. Port identification can be completed by use of either the integral slide label or simple application of an adhesive icon.

Features

- Built in slide label system
- Fits 27mm back box when used with bevelled faceplate
- Cut out dimensions 44.96 x 25.00mm
- 25 Year System Warranty Available



Description	Part Number
Category 6 RJ45 White Module	100-300
Category 6 RJ45 Black Module	100-298

Excel Category 6 Unscreened RJ45 Module – Low Profile



This range of outlets has been designed to meet or exceed the latest ISO and TIA requirements for category six compliance. When installed with excel category 6 cables and patch panels full link and channel compliance can also be achieved. These outlets also provide backward compatibility with category 5 and 5e systems. Product design is based around the established category 5e modules and provides quick and easy termination using LSA compatible tooling. Port identification can be completed by use of the integral slide label or simple application of an adhesive icon.

Features

- Category 6 compliant
- Overall dimensions 50 x 25mm
- Fits 27mm back box when used with bevelled faceplate
- Overall depth 21mm
- Built in slide label system
- Choice of colours
- 25 Year System Warranty Available



Description	Part Number
Category 6 RJ45 White Low Profile Module	100-366
Category 6 RJ45 Black Low Profile Module	100-366-BK

Excel Category 6 Unscreened RJ45 Plastic Faceplates – Loaded



Excel Pre Loaded Single Gang Faceplates consist of either one or two of part numbers 100-300 and Excel bevelled faceplate, with blanks where appropriate. Supplied in a sealed bag these plates save time and money by reducing on site installation and assembly time.

Features

- Category 6 Compliant
- Fits 27mm back box when used with bevelled faceplate
- Built in slide label system
- 25 Year System Warranty Available

Description	Part Number
Category 6 1 x RJ45 White Module c/w Bevelled Plate and Blanks	100-434
Category 6 2 x RJ45 White Modules c/w Bevelled Plate	100-433

Excel Office Category 6 Unscreened RJ45 Module - Low Profile

The Office Excel Category 6 Unscreened RJ45 low profile module has been designed to be used in conjunction with the Office Hardware Mounting Range. The outlet exceeds the latest ISO and TIA requirements for category 6 compliance and when installed with excel category 6 cables and patch panels a full link and channel compliance can also be achieved. These outlets also provide backward compatibility with category 5 and 5e systems. The product provides quick and easy termination using LSA compatible tooling. Port identification can be completed by use of the integral slide label or simple application of an adhesive icon.



Features

- Category 6 compliant
- Colour matches the Office Mounting Hardware Range
- Overall dimensions 50 x 25mm
- Fits 27mm back box when used with bevelled faceplate
- Overall depth 21mm
- Built in slide label system
- 25 Year System Warranty Available

Description	Part Number
Excel Office Category 6 Unscreened Module – Low Profile	100-276

Excel Category 6 Unscreened RJ45 Module - 6c Low Profile

Excel Category 6, low profile 6c unscreened modules are manufactured and tested to the TIA/EIA 568-B.2-1, EN50173-1 and ISO/IEC 11801.2 Category 6 specifications. Each shuttered module is supplied with a slide label field for use of self adhesive or further labelling if required. Termination can be made using LSA compatible tooling. The Excel 6c Low Profile module has been specifically designed to fit the cutouts in metal floor box plates. They are therefore not recommended for use with the 6c faceplates and do not have an exact colour match.

These outlets also provide backward compatibility with the Category 5 and 5e systems.

Features

- Category 6 compliant
- 25 Year System Warranty Available
- Power Sum Compliant
- Low Profile Design - Overall Depth 19,65mm
- Ideal for Floor Box
- LSA Style Termination Blocks
- Overall dimensions 37 x 22mm



Description	Part Number
Category 6, 6c White Module, Low Profile	100-297

Excel Category 6 Unscreened RJ45 Module – 6c



Excel Category 6 6c modules are ideal for floor box installations. The compact two piece design allows for a fast and easy installation and results in a low profile finish.

Features

- Overall dimensions 37 x 22mm
- Choice of colours
- Built in slide label system
- 25 Year System Warranty Available

Description	Part Number
Category 6 RJ45 White 6c Module	100-301

**FACEPLATES
& SHUTTERS**
excel

Turn to page 90 for details

Excel Category 6 Unscreened RJ45 Module – 3 in 1



The Excel 3 in 1 module offers the ultimate in flexibility, space utilisation and ease of installation. The totally modular design allows the mounting of up to 3 shuttered RJ45 ports in a standard flat or bevelled single gang faceplate, or up to 6 in a double gang fascia.

The unique design means that you only load shuttered outlets as required, any capacity within the plate which is required for a later date is simply blanked off, providing a neat and easy to use completed installation. Individual port labelling is also quick and easy with standard Excel outlet slide in fields incorporated into the design.

Features

- High density design
- Individual snap in modules
- Fit standard Excel faceplates
- LSA compatible IDC
- Individual port slide labelling system
- Module dimensions 16.65 x 50.00mm
- 25 Year System Warranty Available

Description	Part Number
Category 6 Single Shuttered Module	100-430
Full Width Blank (equal to width of module)	100-407
3 in 1 Assembly, 3 modules in a single gang bevelled plate	100-432

**HIGH
DENSITY**
excel

More outlets
per faceplate

Excel Category 6 Unscreened Keystone Jack Outlets

The Excel Keystone jack outlets provide an alternative to the one piece shuttered module range. Suitable for mounting in a range of faceplates, shutters and a 1U 24 port frame, these jacks are quick and easy to install.

Features

- Category 6 Compliant
- IDC point at 90° to jack
- Choice of colour
- Mounts in either panel frame or shutter
- 25 Year System Warranty Available
- Third Party Verified



Description	Part Number
Category 6 RJ45 White Keystone Jack	100-011
Category 6 RJ45 Black Keystone Jack	100-011-BK
Category 6 RJ45 Red Keystone Jack	100-011-RD
Category 6 RJ45 Green Keystone Jack	100-011-GN
Category 6 RJ45 Blue Keystone Jack	100-011-BU
Compatible Patch Panel Frames	
Unloaded 16 port Black Patch Panel Frame - Plastic Fascia	100-025
Unloaded 24 port Black Patch Panel Frame - Plastic Fascia	100-026
Unloaded 16 port Chrome Patch Panel Frame	100-027
Unloaded 24 port Chrome Patch Panel Frame	100-028
Unloaded 24 port Keystone V Patch Panel Frame - Black	100-040
Unloaded 24 port Keystone Jack Module Patch Panel - 0.5U	100-041



3P - This product range has been tested by 3P and found to comply with 2nd edition ISO/IEC Generic Cabling Standard 11801, CENELEC EN 50173-1:2007, ANSI/TIA/EIA. 568-B. 2-1, IEC 60603-7-4 and IEC 605/2-26-100. For copies of test certification please contact your local Excel distributor, or visit www.excel-networking.com.



Turn to page 90 for details

Please check with your local Excel Sales Office or distributor for in country product availability

Excel Category 6 Low Profile Unscreened Keystone Jack –Toolless



The Excel Category 6 Low Profile Unscreened Keystone Jack, is a reduced size toolless termination RJ45 socket. The reduced size allows for multiple cable entry directions to be accommodated when this jack is mounted in a standard depth back box. This permits many mounting options including flush shutters at the outlet as well as more common angled shutter used with keystone jacks. A choice of compatible Patch Panel frames with either 16 or 24 port density in both black and chrome are available for this Low Profile Jack. The low profile design allows this jack to fit in the Excel 0.5U 24 Port Patch Panel resulting in a maximum port density of 48 per 1U. The socket itself is housed in a high quality fire retardant plastic cast housing, which opens at the rear in a butterfly manner to reveal the IDC termination points. Once the pairs are arranged in the cable management cap and trimmed it is a simple case of closing the 'butterfly' together to complete the termination. Third party verification by Delta assures this high performance jack exceeds the requirements of the ISO, EN & TIA component standards.

Features

- Low Profile - 28mm overall depth
- 25 Year System Warranty Available
- Delta 3rd Party Verified
- Toolless termination design
- Supports Gigabit Ethernet

Description	Part Number
Category 6 Unscreened Butterfly Style Toolless Keystone Jack - White, Low Profile	100-215-WT
Category 6 Unscreened Butterfly Style Toolless Keystone Jack - Black, Low Profile	100-215-BK
Compatible Patch Panel Frames	
Unloaded 16 port Black Patch Panel Frame - Plastic Fascia	100-025
Unloaded 24 port Black Patch Panel Frame - Plastic Fascia	100-026
Unloaded 16 port Chrome Patch Panel Frame	100-027
Unloaded 24 port Chrome Patch Panel Frame	100-028
24 port Keystone V Patch Panel Frame, Black	100-040
24 port Keystone Patch Panel Frame, 0.5U	100-041



Turn to page 90 for details

Excel Category 6 Unscreened Angled Keystone Jack – Toolless

The Excel Category 6 Unscreened angled Keystone Jack, is an independently verified toolless termination RJ45 socket suitable for mounting patch panels. The angled design of the socket face makes this product ideal for high density frames. Traditional horizontal patch cable management bars can be removed or reduced in number as the leads follow a natural route to the left or right of the panel and the cabinet's vertical management. To the rear of the socket the design is exactly the same as the Excel keystone range, enabling standard termination and cable dressing practices to be followed. The socket itself is housed in a high quality ABS plastic housing, which opens at the rear in a butterfly manner to reveal the IDC termination points. Once the conductors of the cable to be terminated are fed into a wire cap the process is completed by snapping the 'butterfly wings' together with minimal, but firm pressure.



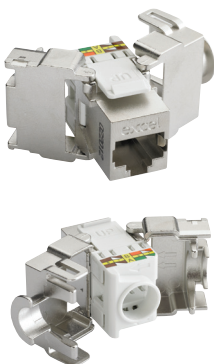
Features

- Category 6 compliant
- Forms Angled Cat 6 Patch Panel when used with part number 100-023
- Two piece, easy to use design
- Toolless termination design
- Suitable for patch panel mounting
- 25 Year System Warranty Available
- Ideal for high density cabling installations

Description	Part Number
Category 6 Unscreened Butterfly Style Toolless Angled Jack - Black	100-213
Compatible Patch Panel Frames	
Unloaded 24 Port Black Angled Keystone Frame	100-023
Unloaded 24 Port Chrome Angled Keystone Frame	100-024

Please check with your local Excel Sales Office or distributor for in country product availability

Excel Category 6 Screened Keystone Jack – Toolless



The Excel Category 6 Screened Keystone Jack, is an independently verified toolless termination RJ45 socket suitable for mounting in range of housings from patch panels, faceplates and shutters to sub floor boxes, and work area distribution enclosures. The socket itself is housed in a high quality zinc die cast housing, which opens at the rear in a butterfly manner to reveal the IDC termination points. Once the conductors of the cable to be terminated are fed into a management cap the process is completed by snapping the 'butterfly wings' together with minimal, but firm pressure.

Features

- Category 6 compliant
- High quality die cast housing
- Toolless termination design
- Suitable for patch panel and faceplate mounting
- 25 Year System Warranty Available
- Suitable for installation in 37mm deep back box with bevelled faceplate
- 360° Shielding protects against alien crosstalk
- EC Verified

Description	Part Number
Category 6 Screened Butterfly Style Toolless Keystone Jack	100-210
Compatible Patch Panel Frames	
Unloaded 16 port Black Patch Panel Frame - Plastic Fascia	100-025
Unloaded 24 port Black Patch Panel Frame - Plastic Fascia	100-026
Unloaded 16 port Chrome Patch Panel Frame	100-027
Unloaded 24 port Chrome Patch Panel Frame	100-028



EC verified. This product has been tested by the Delta EC Cabling Group and complies with the following standards ISO/IEC 11801 2nd edition:2002, ISO/IEC 11801 amendment 2:2010 50173:2007, ANSI/TIA-568-C.2 and IEC 60603-7-5. For copies of test certification please contact your local Excel distributor, or visit www.excel-networking.com or www.delta.dk.

Excel Category 6 FTP Keystone Through Couplers



The Excel range of Category 6 'Through Couplers' provide RJ45 in/out connections, allowing channels to be extended where required. With its standard keystone Jack profile they fit all Keystone panels and outlets.

Features

- Standard Keystone fitting
- Category 6 FTP
- 90 or 180 degree configuration
- Suitable for both screened and unscreened systems
- Standard RJ45 connection both ends
- Maintains channel performance

Description	Part Number
Excel Category 6 FTP 180 Degree Keystone Through Coupler	100-106
Excel Category 6 FTP 90 Degree Keystone Through Coupler	100-108

Excel Category 6 FTP IDC Junction Box

IDC junction boxes are suitable for Category 6 and Category 5e cable joints, repairs and extensions. They are fully screened and include an IDC connection for the drain wire. The housing is metal plated to provide further screening.

Features

- Ideal for use where repairs or extensions are required
- Suitable for CAT6 & CAT5e
- Suitable for screened and unscreened cables
- Can be used as through coupler
- Drain wire IDC connection
- Metal plated



Description	Part Number
Excel Category 6 FTP IDC Junction Box	100-110

Excel 6 Port Category 6 Unscreened ExpressNet Module

The Excel 6 Port Unscreened Category 6 Modules offer a flexible and quick way to terminate and install structured cabling. Manufactured from high impact flame retardant plastic the modules use IDC punch downs for the termination of the copper cables. The incoming cables are secured in place with cable ties resulting in a fully covered termination. After termination the module is simply fitted to one of the compatible Excel ExpressNet Patch Panels permitting different categories of Fibre and Copper to be presented on the same panel. The ExpressNet modules are easily fitted and removed from the rear of the patch panel by activating release latches. The Excel Unscreened Category 6 Module has been independently verified by Delta confirming component level performance of the product.



Features

- 6 Port Unscreened Module
- Cables entering module are individually secured
- 4 & 8 Module Patch Panel Frames
- Toolless assembly and patch panel fitting
- Delta Third Party Verified - Component Level
- Compatible with Excel ExpressNet Panel
- 25 Year System Warranty Available



Description	Part Number
6 Port Category 6 Unscreened ExpressNet Module	100-235
Compatible Patch Panel Frames	
ExpressNet Panel - 4 Module - Empty	100-230
ExpressNet Panel - 8 Module - Empty	100-231



Excel 6 Port Category 6 Screened ExpressNet Module



Excel 6 Port Screened Category 6 Modules offer a flexible and quick way to terminate and install structured cabling. Manufactured from die cast metal the modules use IDC punch downs for the termination of the copper cables. The incoming cables are secured in place with clamps that bonds the screen to the module. The design of the module ensures that screening is provided between ports. After termination the module is simply fitted to one of the compatible Excel ExpressNet Patch Panels permitting different categories of Fibre and Copper to be presented on the same panel. The modules are easily fitted and removed from the rear of the patch panel by activating release latches. The Excel Screened Category 6 ExpressNet Module has been independently verified by Delta confirming component level performance of the product.

Features

- 6 Port Screened Module
- Cables entering module are individually secured
- 4 & 8 Module Patch Panel Frames
- Delta Third Party Verified - Component Level
- Compatible with Excel ExpressNet Panel
- 25 Year System Warranty Available



Description	Part Number
6 Port Category 6 Screened ExpressNet Module	100-236
Compatible Patch Panel Frames	
ExpressNet Panel - 4 Module - Empty	100-230
ExpressNet Panel - 8 Module - Empty	100-231

Please check with your local Excel Sales Office or distributor for in country product availability

Excel Plus – Category 6 Surface Mount Boxes

The Excel Plus surface mount boxes can be used in a wide variety of applications and provide a quick and easy method of installing up to 6 outlets to work areas. These shuttered units can be installed in desk clusters, beneath retail counters, under floors, or wall mounted, they are also ideal for temporary or emergency installations.



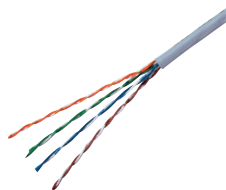
Features

- Provides convenient workstation outlets for Gigabit ethernet applications.
- Available in a choice of port density.
- Shuttered outlets as standard.
- Built in labelling field
- Supplied with cable ties and fixing kit
- 25 Year System Warranty Available

Description	Part Number
Excel Plus 1 Port Cat6 Surface Mount Box white	100-006
Excel Plus 2 Port Cat6 Surface Mount Box white	100-007
Excel Plus 4 Port Cat6 Surface Mount Box white	100-008
Excel Plus 6 Port Cat6 Surface Mount Box white	100-009

Excel Category 5e Unscreened Twisted Pair U/UTP Cable

Excel solid conductor Category 5e is a 4 pair U/UTP cable which conforms to the enhanced performance Category 5 specification. Two 305mtr boxes are supplied in a strong outer carton, clearly marked for on site identification. The outer carton provides protection for both the cable and inner packaging, and allows for easy storage, stacking and movement of goods. When installing simply remove the perforated letter carton strip from the box front and pull two cables as normal from the box. Where necessary the outer carton can be discarded and the inner - standard 305mtr reel boxes - utilised.



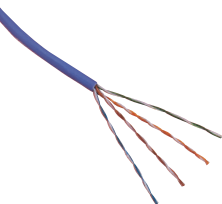
Features

- Category 5e Compliant
- Power Sum Compliant
- Tested for FEXT And Return Loss
- 305 Metre Fast Feed Box
- 305 to 0 metre marking helps to reduce waste
- 25 Year System Warranty Available



Description	Part Number
Category 5e U/UTP Eca PVC Cable Grey - 305m	100-065
Category 5e U/UTP Eca PVC Cable Grey - 500m	100-059

Excel Category 5e Unscreened Twisted Pair (U/UTP) Cable – LS0H



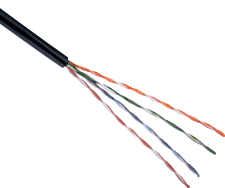
Excel solid conductor 4 pair U/UTP cable with a low smoke zero halogen outer sheath. Two 305mtr boxes are supplied in a strong outer carton, clearly marked for on site identification. The outer carton provides protection for both the cable and inner packaging, and allows for easy storage, stacking and movement of goods. When installing simply remove the perforated letter carton strip from the box front and pull two cables as normal from the box. Where necessary the outer carton can be discarded and the inner - standard 305mtr reellex boxes - utilised.

Features

- Category 5e Compliant
- Power Sum Next
- Choice of colour
- 305 Metre Fast Feed Box
- 305 to 0 metre marking helps to reduce waste
- 25 Year System Warranty Available
- Cca Euroclass = Cca s1b d1 a1
- Dca Euroclass = Dca s2 d2 a2

Description	Part Number
Category 5e Cca LS0H Cable Violet - 305m	170-066
Category 5e Dca LS0H Cable Violet - 305m	100-066
Category 5e Cca LS0H Cable White - 305m	100-060
Category 5e Dca LS0H Cable Red - 305m	100-061
Category 5e Cca LS0H Cable Blue - 305m	100-062
Category 5e Dca LS0H Cable Green - 305m	100-063
Category 5e Cca LS0H Cable Yellow - 305m	100-064
Category 5e Dca LS0H Cable Orange - 305m	100-057
Category 5e Eca LS0H Dual Cable, 500m, White	100-102

Excel Category 5e Unscreened Twisted Pair (U/UTP) Cable – External Grade



Excel solid conductor 4 pair U/UTP cable with a black polyethylene outer sheath, for outdoor use.

Features

- Category 5e Compliant
- UV Resistant
- Duct Grade
- 305 Metre Fast Feed Box
- 25 Year System Warranty Available

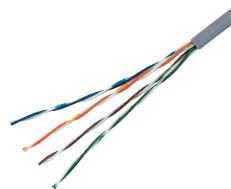
Description	Part Number
Category 5e External Grade Fca PE Cable Black - 305m	100-090





Excel Category 5e Unscreened Twisted Pair (U/UTP) Cable – Patch Cable





Excel stranded conductor 4 pair U/UTP patch cable is highly flexible easy to use and Category 5e compliant, ideal for the manufacture of bespoke cables.

Features

- Category 5e Compliant
- Choice Of Colours
- 26 AWG Stranded Conductors
- 305 Metre Fast Feed Box



			
Grey	Blue	Green	Black
100-081-305M	100-082-305M	100-083-305M	100-084-305M

			
Orange	Red	White	Yellow
100-085-305M	100-087-305M	100-089-305M	100-091-305M

Please check with your local Excel Sales Office or distributor for in country product availability

Excel Category 5e Unscreened Twisted Pair (U/UTP) – Patch Leads Booted – LS0H



Excel stranded conductor 4 pair U/UTP booted patch leads are available in various colours with matching strain relief boots.

Features

- Category 5e Compliant
- Choice Of Colours Up To 20 Metre
- T568B Wiring
- Blade style 'slimline' moulded strain relief boot with clip protector
- LS0H outer sheath

Length (M)	Grey	Red	Blue	Black	Green
0.2	BB0.2MPLGE	BB0.2MPLRD	BB0.2MPLBU	BB0.2MPLBK	BB0.2MPLGN
0.3	BB0.3MPLGE	BB0.3MPLRD	BB0.3MPLBU	BB0.3MPLBK	BB0.3MPLGN
0.5	BB0.5MPLGE	BB0.5MPLRD	BB0.5MPLBU	BB0.5MPLBK	BB0.5MPLGN
0.75	BB0.75MPLGE	BB0.75MPLRD	BB0.75MPLBU	BB0.75MPLBK	BB0.75MPLGN
1	BB001MPLGE	BB001MPLRD	BB001MPLBU	BB001MPLBK	BB001MPLGN
1.5	BB015MPLGE	BB015MPLRD	BB015MPLBU	BB015MPLBK	BB015MPLGN
2	BB002MPLGE	BB002MPLRD	BB002MPLBU	BB002MPLBK	BB002MPLGN
3	BB003MPLGE	BB003MPLRD	BB003MPLBU	BB003MPLBK	BB003MPLGN
4	BB004MPLGE	BB004MPLRD	BB004MPLBU	BB004MPLBK	BB004MPLGN
5	BB005MPLGE	BB005MPLRD	BB005MPLBU	BB005MPLBK	BB005MPLGN
6	BB006MPLGE	BB006MPLRD	BB006MPLBU	BB006MPLBK	BB006MPLGN
7	BB007MPLGE	BB007MPLRD	BB007MPLBU	BB007MPLBK	BB007MPLGN
8	BB008MPLGE	BB008MPLRD	BB008MPLBU	BB008MPLBK	BB008MPLGN
9	BB009MPLGE	-	BB009MPLBU	-	BB009MPLGN
10	BB010MPLGE	BB010MPLRD	BB010MPLBU	BB010MPLBK	BB010MPLGN
15	BB150MPLGE	BB150MPLRD	BB150MPLBU	BB150MPLBK	BB150MPLGN
20	BB200MPLGE	BB200MPLRD	BB200MPLBU	-	BB200MPLGN
25	BB250MPLGE	-	-	-	-
30	BB300MPLGE	-	-	-	-



More colours opposite

Excel Category 5e Unscreened Twisted Pair (U/UTP) – Patch Leads Booted – LSH

Length (M)	 Yellow	 Violet	 White	 Orange	 Pink
0.2	BB0.2MPLYW	-	BB0.2MPLWT	-	-
0.3	BB0.3MPLYW	BB0.3MPLVT	BB0.3MPLWT	BB0.3MPLOR	BB0.3MPLPK
0.5	BB0.5MPLYW	BB0.5MPLVT	BB0.5MPLWT	BB0.5MPLOR	-
0.75	BB0.75MPLYW	BB0.75MPLVT	BB0.75MPLWT	BB0.75MPLOR	BB0.75MPLPK
1	BB001MPLYW	BB001MPLVT	BB001MPLWT	BB001MPLOR	BB001MPLPK
1.5	BB015MPLYW	BB015MPLVT	BB015MPLWT	BB015MPLOR	-
2	BB002MPLYW	BB002MPLVT	BB002MPLWT	BB002MPLOR	BB002MPLPK
3	BB003MPLYW	BB003MPLVT	BB003MPLWT	BB003MPLOR	BB003MPLPK
4	BB004MPLYW	BB004MPLVT	-	BB004MPLOR	-
5	BB005MPLYW	BB005MPLVT	BB005MPLWT	BB005MPLOR	BB005MPLPK
6	BB006MPLYW	BB006MPLVT	BB006MPLWT	BB006MPLOR	-
7	BB007MPLYW	BB007MPLVT	BB007MPLWT	BB007MPLOR	-
8	BB008MPLYW	-	-	BB008MPLOR	-
10	BB010MPLYW	BB010MPLVT	BB010MPLWT	BB010MPLOR	BB010MPLPK
15	BB150MPLYW	BB150MPLVT	BB150MPLWT	-	-
20	BB200MPLYW	-	BB200MPLWT	-	-
25	-	-	BB250MPLWT	-	-
30	-	-	BB300MPLWT	-	-



Please check with your local Excel Sales Office or distributor for in country product availability

Excel Category 5e Unscreened Twisted Pair (U/UTP) – Patch Leads Crossover – LS0H



Excel stranded conductor 4 pair U/UTP booted cables for use when cascading equipment without crossover ports.



Features

- Independently Verified
- Crossover termination
- LS0H Cable Sheath
- Category 5e Compliant
- Choice of Colour
- Blade Style Boot with Clip Protector



Length (M)	Grey	Red	Green	Violet	Yellow	White
1	BB001MPLGE/X	BB001MPLRD/X	BB001MPLGN/X	-	-	-
2	BB002MPLGE/X	BB002MPLRD/X	-	BB002MPLVT/X	BB002MPLYW/X	-
3	BB003MPLGE/X	BB003MPLRD/X	-	BB003MPLVT/X	-	-
5	BB005MPLGE/X	BB005MPLRD/X	-	-	BB005MPLYW/X	BB005MPLWT/X
10	BB010MPLGE/X	-	-	-	-	-

Excel Category 5e Screened Twisted Pair (F/UTP) Cable



Excel Solid Conductor 4 pair F/UTP is a high performance Category 5e compliant cable suitable for installations where high levels of EMI and RFI could be present.

Features

- Category 5e Compliant
- 305 Metre Fast Feed Box
- 100% Aluminium Foil Tape screen
- PVC or LS0H Outer Sheath
- 25 Year System Warranty Available
- Dca Euroclass = Dca s1a d2 a1

Description	Part Number
Category 5e F/UTP Dca PVC Cable Light Grey - 305m	EXC100-217/LTGREY
Category 5e F/UTP Dca LS0H Cable Violet - 305m	100-217
Category 5e F/UTP Eca PVC Cable Grey - 305m	100-216

Excel Category 5e Screened Twisted Pair (F/UTP) – Patch Leads Booted

Excel Stranded Conductor 4 pair F/UTP patch leads are available in various colours and are manufactured from UL verified cable.



Features

- Category 5e compliant
- Individually bagged
- Choice of colours in 1, 3 and 5 Metre
- Blade style 'slimline' moulded strain relief boot with clip protector
- 100% aluminium foil tape screen



Length (M)	Grey	Red	Blue	Green	Yellow
0.2	BBS0.2MPLGE	-	-	-	-
0.5	BBS0.5MPLGE	-	-	-	-
1	BBS001MPLGE	BBS001MPLRD	BBS001MPLBU	BBS001MPLGN	-
2	BBS002MPLGE	-	-	-	-
3	BBS003MPLGE	BBS003MPLRD	BBS003MPLBU	BBS003MPLGN	BBS003MPLYW
5	BBS005MPLGE	-	-	-	-
7	BBS007MPLGE	-	-	-	-
10	BBS010MPLGE	-	-	-	-
15	BBS150MPLGE	-	-	-	-

Excel Category 5e Screened Twisted Pair (F/UTP) – Patch Leads Crossover – LS0H

Excel stranded conductor 4 pair screened booted cables for use when cascading equipment without crossover ports.

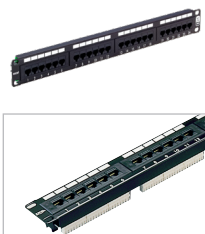
Features

- Category 5e compliant
- Individually bagged



Description	Part Number
Category 5e F/UTP Blade Booted Patch Lead LS0H Crossover 1m Red	BBS001MPLRD/X
Category 5e F/UTP Blade Booted Patch Lead LS0H Crossover 3m Red	BBS003MPLRD/X

Excel Category 5e Unscreened RJ45 Patch Panels – Black



Excel Category 5e patch panels comply with the EIA TIA Standard for enhanced Category 5 and are available in a choice of port density. Each panel offers a choice of labelling with the option to use the screen printed fields on the panel facia or the slide label system which is enclosed with each panel. Ease of installation is assured with ample rear cable management positions and IDC blocks allowing use of Krone tooling.

Features

- Category 5e Compliant
- Choice of Port Density
- Choice of Labelling System
- 25 Year System Warranty Available
- Cage nuts and 1-96 self adhesive label kit included

Description	Part Number
Category 5e 16 Port 1U Black Patch Panel	100-720
Category 5e 24 Port 1U Black Patch Panel	100-726
Category 5e 32 Port 2U Black Patch Panel	100-722
Category 5e 48 Port 2U Black Patch Panel	100-728

Excel Category 5e Unscreened RJ45-RJ45 Through Coupler Panels - Black



Excel Category 5e through coupler panels present a standard RJ45 connector to both the front and rear of the panel, and are ideal for temporary or emergency cabling installations as they can be installed in a matter of minutes. They can also be installed as equipment link panels.

Features

- Quick and simple to install
- Category 5e compliant
- 25 Year System Warranty Available
- Cage nuts and 1-96 label kit included

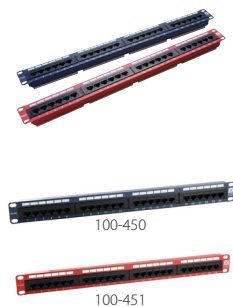
Description	Part Number
Category 5e 24 Port 1U Black Patch Panel Through Coupler - RJ45 to RJ45	100-309

Excel Category 5e Unscreened RJ45 Patch Panels – Coloured

Available in a choice of colours, these Category 5e compliant patch panels are ideal for the identification of particular service or departments within a network or organisation. Available from stock in a 1U high density design each panel offers a choice of labelling schemes. Use either the screen printed icons on the panel facia or the self adhesive slide label or pre numbered kits included with the unit. Ease of installation is assured with ample rear cable management positions and IDC blocks allowing the use of LSA compatible tooling.

Features

- Category 5e Compliant
- High density design
- Choice of Labelling System
- 25 Year System Warranty Available
- Cage nuts and 1-96 self adhesive label kit included



Description	Part Number
24 Port 1U Blue Patch Panel	100-450
24 Port 1U Red Patch Panel	100-451

Please check with your local Excel Sales Office or distributor for in country product availability

Excel Plus – Category 5e Unscreened RJ45 Patch Panels



The Excel Plus high density patch panel combines the proven quality and performance of the existing range with enhanced aesthetics and labelling system. Each panel consists of a number of 8 way blocks of RJ45 sockets, housed in a high quality plastic moulding. To the front of the panel this moulding contains the new easy to use slide label system. Each block of 8 sockets has its own label which can be removed from either side of the covered label field. The label strip itself is protected by a clear, tough plastic insert.

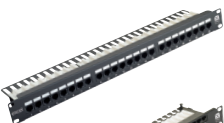
Features

- Enhanced slide label system
- 25 Year System Warranty Available
- Cage nuts and 1-96 self adhesive label kit included



Description	Part Number
Category 5e 24 Port 1U Black Patch Panel	100-470
Category 5e 24 Port 1U Blue Patch Panel	100-476

Excel Category 5e Unscreened Right Angle RJ45 Patch Panels



Available in 24 or 48 port options the Excel right angled patch panel represents a cost effective category 5e solution with integral rear cable management. Both occupy 1U position and present LSA compatible termination IDCs that are horizontal to the panel facia to allow quick and easy cable installation. The 48 port version uses a double deck design to facilitate two sets of 24 ports to be installed.

Features

- Built in rear cable management
- 25 Year System Warranty Available
- Cage nuts and 1-96 self adhesive label kit included
- Uses Excel Punchdown Tool – BT Ref 2A



Description	Part Number
Category 5e 24 Port 1U Right Angle Black Patch Panel	100-460
Category 5e 48 Port 1U Right Angle Black Patch Panel	100-497

Excel Plus – Category 5e Unscreened Right Angle RJ45 Patch Panels

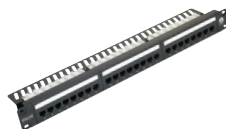
The Excel Plus high density patch panel combines the proven quality and performance of the existing range with enhanced aesthetics and labelling system. Each panel consists of a number of 8 way blocks of RJ45 sockets, housed in a high quality plastic moulding. To the front of the panel this moulding contains the new easy to use slide label system. Each block of 8 sockets has its own label which can be removed from either side of the covered label field. The label strip itself is protected by a clear, tough plastic insert.

To make installation as easy and fast as possible, the LSA compatible termination blocks are positioned at a right angle to the panel front on the built in rear cable management tray.

Features

- Enhanced slide label system
- 25 Year System Warranty Available
- Cage nuts and 1-96 self adhesive label kit included

Description	Part Number
Category 5e 24 Port 1U Right Angle Black Patch Panel	100-490



Excel Category 5e Screened Right Angle RJ45 Patch Panels

Excel High Density Screened Patch Panels have 24 RJ45 ports in 1U, IDC termination blocks are positioned at 90° to the sockets which allows for fast and easy termination.

Features

- Category 5e Compliant
- Screen Printed Label System
- Built In Rear Cable Management
- 25 Year System Warranty Available
- Cage nuts and 1-96 self adhesive label kit included

Description	Part Number
Category 5e 24 Port 1U Black Patch Panel	100-736



Excel Category 5e Unscreened RJ45 Modules



Excel Category 5e RJ45 modules comply with the standard for enhanced Category 5. Each shuttered module is supplied with a slide label field and space above, this is allowed for use of self adhesive or further labelling if required. Termination can be made using Krone tooling, a cable tie base is positioned between the IDC blocks to relieve cable stress.

Features

- Category 5e Compliant
- Overall dimensions 50 x 25mm
- Cut out dimensions 44.96 x 25mm, Standard and Low Profile module
- Built in slide label system
- Fits 27mm back box when used with bevelled faceplate
- 25 Year System Warranty Available



Description	Part Number
Category 5e RJ45 White Module	100-700
Category 5e RJ45 Blue Module	100-730
Category 5e RJ45 Red Module	100-731
Category 5e RJ45 Green Module	100-732



Turn to page 90 for details

Excel Category 5e Unscreened RJ45 Plastic Faceplates – Loaded



Excel Pre Loaded Single Gang Faceplates consist of either one or two of part numbers 100-700 and Excel bevelled faceplate, with blanks where appropriate. Supplied in a sealed bag these plates save time and money by reducing on site installation and assembly time.

Features

- Category 5e Compliant
- Fits 27mm back box when used with bevelled faceplate
- Built in slide label system
- 25 Year System Warranty Available

Description	Part Number
Category 5e 1 x RJ45 White Module c/w Bevelled Plate and Blanks	100-702
Category 5e 2 x RJ45 White Modules c/w Bevelled Plate	100-704

Excel Category 5e Unscreened RJ45 Modules – 3 in 1

The Excel 3 in 1 module offers the ultimate in flexibility, space utilisation and ease of installation. The totally modular design allows the mounting of up to 3 shuttered RJ45 ports in a standard flat or bevelled single gang faceplate, or up to 6 in a double gang fascia.

The unique design means that you only load shuttered outlets as required, any capacity within the plate which is required for a later date is simply blanked off, providing a neat and easy to use completed installation. Individual port labelling is also quick and easy with standard Excel outlet slide in fields incorporated into the design.



Features

- High density design
- Individual snap in modules
- Fit standard Excel faceplates
- Individual port slide labelling system
- Module dimensions 16.65 x 50.00mm
- LSA compatible IDC
- 25 Year System Warranty Available

**HIGH
DENSITY**
excel

More outlets
per faceplate

Description	Part Number
Category 5e Single Shuttered RJ45 Module	100-405
Full width blank (equal to width of module)	100-407
3 in 1 assembly, 3 modules in a single gang bevelled plate	100-411

Please check with your local Excel Sales Office or distributor for in country product availability

Excel RJ45 Metal Faceplates



The Excel RJ45 Metal faceplates are designed to work with the standard Excel Category 5e modules – part number 100-760. Ideal for installations in public areas, such as hotels, homes, or for use in prestige office environments. Choose from polished chrome, brushed aluminium or satin brass finish.

Features

- Choice of single and double outlets
- Choice of finish
- Supplied with fixing screws
- 25 Year System Warranty Available

Description	Part Number
Brushed Stainless Single Gang Plate	BRDE335
Polished Chrome Single Gang Plate	PSDE335
Compatible Module	
Category 5e RJ45 White Low Profile Module	100-760
Category 5e RJ45 Black Low Profile Module	100-763

Excel Category 5e Unscreened RJ45 Module – Low Profile



Excel Category 5e RJ45 modules comply with the EIA TIA Standard for enhanced Category 5. Each shuttered module is supplied with a slide label field and space above, this is allowed for use of self adhesive or further labelling if required. Termination can be made using Krone tooling, a cable tie base is positioned to the side of the IDC blocks to relieve cable stress.

Features

- Category 5e Compliant
- Built in slide label system
- Overall dimensions 50 x 25mm
- 25 Year System Warranty Available
- Fits 27mm back box when used with bevelled faceplate
- Overall depth 21mm



Description	Part Number
Category 5e RJ45 White Low Profile Module	100-760
Category 5e RJ45 Black Low Profile Module	100-763
Category 5e RJ45, Low Profile Module - Euromod, Blue	100-737
Category 5e RJ45, Low Profile Module - Euromod, Red	100-738

Excel Office Category 5e Unscreened RJ45 Module - Low Profile

The Office Excel Category 5e Unscreened RJ45 low profile module has been designed to be used in conjunction with the Office Hardware Mounting Range. Excel Category 5e Low Profile RJ45 modules comply with the standards for enhanced Category 5. The product provides quick and easy termination using LSA compatible tooling. Port identification can be completed by use of the integral slide label or simple application of an adhesive icon.



Features

- Category 5e compliant
- Colour matches the Office Mounting Hardware Range
- Overall dimensions 50 x 25mm
- Fits 27mm back box when used with bevelled faceplate
- Overall depth 21mm
- Built in slide label system
- 25 Year System Warranty Available



Description	Part Number
Excel Office Category 5e Unscreened Module – Low Profile	100-275

Excel Category 5e Unscreened Module – 6c Low Profile

Excel Category 5e, low profile 6c Unshielded Twisted Pair (U/UTP) modules comply with the standards for enhanced Category 5. Each shuttered module is supplied with a label field for use of self adhesive or further labelling if required. Termination can be made using LSA compatible tooling. The Excel 6c Low Profile module has been specifically designed to fit the cutouts in metal floor box plates. They are therefore not recommended for use with the 6c faceplates and do not have an exact colour match.



Features

- Category 5e compliant
- 25 Year System Warranty Available
- Power Sum Compliant
- Low Profile Design - Overall Depth 19.65mm
- Ideal for Floor Box
- LSA Style Termination Blocks
- Overall dimensions 37 x 22mm



Description	Part Number
Category 5e RJ45 White 6c Module, Low Profile	100-757

Excel Category 5e Unscreened RJ45 Module – 6c



Excel Category 5e 6c modules are ideal for floor box installations. The compact two piece design allows for a fast and easy installation and results in a low profile finish.

Features

- Independently verified to Category 5e standard
- Overall dimensions 37 x 22mm
- Built in slide label system
- 25 Year System Warranty Available

Description	Part Number
Category 5e RJ45 White 6c Module	100-758

Excel Category 5e Unscreened Keystone Jack Outlets



The Excel Keystone jack outlets provide an alternative to the one piece shuttered module range. Suitable for mounting in a range of faceplates, shutters and a 1u 24 port frame, these jacks are quick and easy to install.

Features

- Category 5e Compliant
- IDC point at 90° to jack
- Choice of colour
- Mounts in either panel or shutter
- 25 Year System Warranty Available

Description	Part Number
Category 5e RJ45 White Keystone Jack	100-010
Category 5e RJ45 Black Keystone Jack	100-010-BK
Compatible Patch Panel Frames	
Unloaded 16 port Black Patch Panel Frame - Plastic Fascia	100-025
Unloaded 24 port Black Patch Panel Frame - Plastic Fascia	100-026
Unloaded 16 port Chrome Patch Panel Frame	100-027
Unloaded 24 port Chrome Patch Panel Frame	100-028

**FACEPLATES
& SHUTTERS**
excel

Turn to page 90 for details

Excel Category 5e Low Profile Unscreened Keystone Jack –Toolless

The Excel Category 5e Low Profile Unscreened Keystone Jack, is a reduced size toolless termination RJ45 socket. The reduced size allows for multiple cable entry directions to be accommodated when this jack is mounted in a standard depth back box. This permits many mounting options including flush shutters at the outlet as well as more common angled shutter used with keystone jacks. A choice of compatible Patch Panel frames with either 16 or 24 port density in both black and chrome are available for this Low Profile Jack. The low profile design allows this jack to fit in the Excel 0.5U 24 Port Patch Panel resulting in a maximum port density of 48 per 1U. The socket itself is housed in a high quality fire retardant plastic cast housing, which opens at the rear in a butterfly manner to reveal the IDC termination points. Once the pairs are arranged in the cable management cap and trimmed it is a simple case of closing the 'butterfly' together to complete the termination.

Features

- Low Profile - 28mm overall depth
- Supports Gigabit Ethernet
- 25 Year System Warranty Available
- Toolless termination design

Description	Part Number
Category 5e Low Profile Unscreened Butterfly Style Toolless Keystone Jack - White	100-202-WT
Category 5e Low Profile Unscreened Butterfly Style Toolless Keystone Jack - Black	100-202-BK
Compatible Patch Panel Frames	
Unloaded 16 port Black Patch Panel Frame - Plastic Fascia	100-025
Unloaded 24 port Black Patch Panel Frame - Plastic Fascia	100-026
Unloaded 16 port Chrome Patch Panel Frame	100-027
Unloaded 24 port Chrome Patch Panel Frame	100-028
24 port Keystone V Patch Panel Frame, Black	100-040
24 port Keystone Patch Panel Frame, 0.5U	100-041



**FACEPLATES
& SHUTTERS**
excel

Turn to page 90 for details

Excel Plus – Category 5e Surface Mount Boxes



The Excel Plus surface mount boxes can be used in a wide variety of applications and provide a quick and easy method of installing up to 6 outlets to work areas. These shuttered units can be installed in desk clusters, beneath retail counters, under floors, or wall mounted, they are also ideal for temporary or emergency installations.

Features

- Provides convenient workstation outlets for Gigabit ethernet applications.
- Available in a choice of port density.
- Shuttered outlets as standard.
- Built in labelling field
- Supplied with cable ties and fixing kit
- 25 Year System Warranty Available

Description	Part Number
1 Port Cat5e Surface Mount Box White	100-002
2 Port Cat5e Surface Mount Box White	100-003
4 Port Cat5e Surface Mount Box White	100-004
6 Port Cat5e Surface Mount Box White	100-005

Excel Voice Modules



The Euro and 6c style voice outlets have the standard Excel slide label system and an LJU right polarised socket as standard. The Euro style fits the standard Excel faceplates whereby the 6c modules can be used in most floor plates or the new Excel wall mount 6c faceplates. A left hand polarised version is available for applications requiring this design.

Features

- Euro style 50 x 25mm overall dimensions
- 6c style 37 x 22mm overall dimensions
- Fit standard Excel faceplates
- Choice of specification
- LJU socket
- Slide label system
- 25 Year System Warranty Available

Description	Part Number
Secondary Voice Module, Euro style	100-781
PABX Voice Module, Euro style	100-783
PSTN Voice Module, Euro style	100-785
Secondary Voice Module, 6c style	100-787
PABX Voice Module, 6c style	100-789

Excel Category 5e Screened RJ45 Module

Excel Category 5e RJ45 modules comply with the EIA TIA Standard for enhanced Category 5. Each shuttered module is supplied with a slide label field and space above, this is allowed for use of self adhesive or further labelling if required. Termination can be made using LSA tooling, a cable tie base is positioned between the IDC blocks to relieve cable stress.

Features

- Category 5e Compliant
- Overall dimensions 50 x 25mm
- Fits 27mm back box when used with bevelled faceplate
- Built in slide label system
- 25 Year System Warranty Available



Description	Part Number
Category 5e Screened RJ45 White Module	100-706

Excel Category 5e Screened Plastic Faceplates – Loaded

Excel Pre Loaded Single Gang Faceplates consist of two of part numbers 100-706 – Excel bevelled faceplate. Supplied in a sealed bag these plates save time and money by reducing on site installation and assembly time.

Features

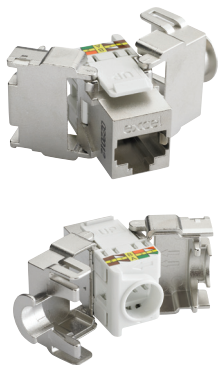
- Category 5e Compliant
- Fits 27mm back box when used with bevelled faceplate
- Built in slide label system
- 25 Year System Warranty Available



Description	Part Number
2 x RJ45 White Modules c/w Bevelled Plate	100-710



Excel Category 5e Screened Keystone Jack – Toolless



The Excel Category 5e Screened Keystone Jack, is a toolless termination RJ45 socket suitable for mounting in range of housings from patch panels, faceplates and shutters to sub floor boxes, and work areas distribution enclosures. The socket itself is housed in a high quality zinc die cast housing, which opens at the rear in a butterfly manner to reveal the IDC termination points. Once the conductors of the cable to be terminated are fed into a management cap the process is completed by snapping the 'butterfly wings' together with minimal, but firm pressure. A choice of Patch Panel frames with either 16 or 24 port density in both black and chrome are available.

Features

- Category 5e Compliant
- High quality die cast housing
- Toolless termination design
- Suitable for patch panel and faceplate mounting
- Suitable for installation in 37mm deep back box with bevelled faceplate
- 25 Year System Warranty Available
- Independently verified
- 360° Shielding protects against alien crosstalk



Description	Part Number
Category 5e Screened Butterfly Style Toolless Keystone Jack	100-906
Compatible Patch Panel Frames	
Unloaded 16 port Black Patch Panel Frame - Plastic Fascia	100-025
Unloaded 24 port Black Patch Panel Frame - Plastic Fascia	100-026
Unloaded 16 port Chrome Patch Panel Frame	100-027
Unloaded 24 port Chrome Patch Panel Frame	100-028

ETL - This product range has been tested by ETL and found to comply with ANSI/TIA - 568-B.2 Category 5e. For copies of test certification please contact your local Excel distributor, or visit www.excel-networking.com.

**FACEPLATES
& SHUTTERS**
excel

Turn to page 90 for details

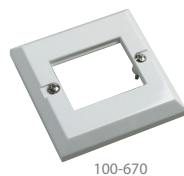
Excel 6c Faceplates

A new range of single and double gang faceplates and associated blanks, specifically designed for the mounting of the Excel range of 6c voice and data modules.

Features

- Single and Double Gang
- Screen printing option available
- Blank Plate

Description	Part Number
Single gang plate, up to 2 outlets - White	100-670
Double gang plate, up to 4 outlets - White	100-671
Full Width Blank Plate - White	100-672
Full Width Blank Plate - Black	100-672-BK



100-670



100-671

Excel Mounting Hardware



100-175



100-020



100-022



100-018



100-014



100-712



100-716



100-714



100-718

In addition to the standard flat Euromod – 50x25mm and 6c – 22.5x37mm – is the recommended angled shutter. Available in the standard Euromod cut out size, this housing is designed to assist in the installation of large diameter cables in confined spaces such as standard back boxes, multi compartment trunking, and floor boxes.

The design presents the keystone at 45 degrees to both the solid conductor cable being terminated, and the RJ45 patch cable to be connected to the installed socket.

Each of the shutters and blanking plates available are compatible with the range of Excel faceplates.

Euromod and 6c Shutter features

- Choice of shutter size
- Choice of faceplate
- Suitable for use with
- Category 5e, Category 6 and Category 6_A Keystone jacks

Angled Shutter features

- Choice of design
- Compatible with Excel faceplates
- Labelling field

Faceplates features

- Supplied with fixing screws
- Choice of bevelled or flat style
- Choice of blanking plates
- Screen printing option available

Description	Part Number
White Shutter to suit Keystone Jack, Angled, 50 x 25mm	100-175
Black Shutter to suit Keystone Jack, Angled, 50 x 25mm	100-175-BK
White Shutter to suit Keystone Jack, Category 6 _A , Angled, 50 x 25mm	100-020
Black Shutter to suit Keystone Jack, Category 6 _A , Angled 50 x 25mm	100-020-BK
White Shutter to suit Keystone Jack, 50 x 25mm	100-014
Black Shutter to suit Keystone Jack, 50 x 25mm	100-014-BK
White Shutter to suit Keystone Jack, 6c, 38.5 x 25mm	100-018
Black Shutter to suit Keystone Jack, 6c, 38.5 x 25mm	100-018-BK
White Shutter to suit Keystone Jack, Angled, 6c	100-022
Black Shutter to suit Keystone Jack, Angled, 6c	100-022-BK
Black Shutter to suit Keystone Jack, Angled, 50 x 25mm	100-175-BK
White Single Gang Bevelled Plate without Blanks	100-712
White Single Gang Flat Plate without Blanks	100-714
Black Single Gang Flat Plate without Blanks	100-714-BK
White Double Gang Bevelled Plate without Blanks	100-716
White Double Gang Flat Plate without Blanks	100-718
White Half Width (12.5mm) Blank Plate	100-715
Black Half Width (12.5mm) Blank Plate	100-715-BK
White Full Width (25mm) Blank Plate	100-719
Black Full Width (25mm) Blank Plate	100-719-BK

Excel Office Mounting Hardware

The Excel Office Range brings style and enhanced aesthetics to any Excel installation, thanks to its curved plate finish and built in labelling fields.

The portfolio includes Category 5e and Category 6 Low profile modules allowing installation in shallow back boxes and dado trunking. Additionally an angled keystone shutter is available that accepts the full range of Excel Category 5e, 6 and 6_A keystone jacks. The Single and Double Gang faceplates are each supplied with two half (12.5mm wide) blanks. In the case of the Single Gang Faceplate this allows a single jack or shutter to be mounted centrally in the aperture. The two half (12.5 mm wide) blanks supplied with the Double Gang Faceplate allows spacing options for mounting three jacks or shutters in the faceplate.

The range is available in Office White or Charcoal Grey. These two colour options permit the assembly of the telecommunications outlets to contrast with the wall finish if required to comply with the Equality Act 2010 and Part M of the Building Regulations. As all of the components are available in Office White and Charcoal Grey the telecommunications outlet can comprise of any combination:

White Shutter/Module & White Faceplate

Grey Shutter/Module & White Faceplate

White Shutter/Module & Grey Faceplate

Grey Shutter/Module & Grey Faceplate

Features

- Enhanced aesthetics
- Euromod size
- Enhanced colour
- Faceplates supplied with blanks
- Curved plate finish
- Available in Office White and Charcoal Grey

Description	Part Number
Excel Office Single Gang Faceplate complete with 2 half blanks - White	100-270
Excel Office Single Gang Faceplate complete with 2 half blanks - Grey	100-270-GE
Excel Office Double Gang Faceplate complete with 2 half blanks - White	100-271
Excel Office Double Gang Faceplate complete with 2 half blanks - Grey	100-271-GE
Excel Office Category 5e Unscreened Module - Low Profile - White	100-275
Excel Office Category 5e Unscreened Module - Low Profile - Grey	100-275-GE
Excel Office Category 6 Unscreened Module - Low Profile - White	100-276
Excel Office Category 6 Unscreened Module - Low Profile - Grey	100-276-GE
Excel Office Angled Keystone Shutter 25X50 mm - White	100-280
Excel Office Angled Keystone Shutter 25X50 mm - Grey	100-280-GE
Excel Office Keystone Single Gang Faceplate - 1 Port	100-273
Excel Office Keystone Single Gang Faceplate - 2 Port	100-274
Excel DIN Mountable Module for Keystone Jacks	100-701



Excel Mounting Hardware - Back Boxes



A range of single and double gang high quality Back Boxes.

Features

- Choice of Single or Double Gang
- Choice Of Depth

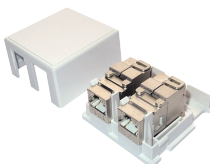


Description	Part Number
Single Gang 27mm Deep Back Box	100-612
Single Gang 32mm Deep Back Box	100-614
Single Gang 37mm Deep Back Box	100-616
Single Gang 47mm Deep Back Box	100-618
Double Gang 27mm Deep Back Box	100-619
Double Gang 32mm Deep Back Box	100-621
Double Gang 37mm Deep Back Box	100-620
Double Gang 47mm Deep Back Box	100-622

Excel 1 & 2 Port Keystone Surface Mount Box



The Excel 1 & 2 Port Keystone Wall Mount box offers a compact discrete jack presentation. The box accepts standard and low profile toolless as well as the IDC keystone jacks (plastic support removed to fit standard size toolless jacks). Supplied with one keystone opening as standard. The opening for the second jack is made with side cutters or a knife if required. The base is fixed in position using appropriate screws (supplied by others) and the lid snaps into place to finish the installation. The lid has various cut out sections to facilitate cable entry from various directions.



Keystone Jacks not included

Features

- Accepts 1 or 2 Keystone Jacks
- Compact discrete size
- Multiple cable entry
- For standard and low profile Excel keystone jacks
- Snap out second jack aperture
- Built in cable tie attachments

Description	Part Number
Excel 1 & 2 Port Keystone Surface Mount Box	100-021

Excel Curved 45 x 45 mm Keystone Shutters

The Excel Curved 45 x 45 mm Keystone Shutters are available in 1 and 2 port versions. Each shutter will support all of the Excel Keystone Jacks enabling screened and unscreened Category 5e, 6 and 6_A terminations to be presented in a uniform fashion.

Fixing clips are positioned on the rear of the shutter to allow the fitment to horizontally or vertically mounted trunking whilst maintain upright orientation of the shutter. Each port is protected with a curved, spring loaded shutter in matching material. The shutter comes complete with paper label and fitted clear window.



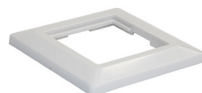
Features

- Accepts all Excel Keystone Jacks
- Available in 1 & 2 Port Versions
- Directly mount in appropriate 45mm trunking
- Curved shape
- Large labelfield

Description	Part Number
Excel Curved 45 x 45 mm Shutter – 1 Port	100-281
Excel Curved 45 x 45 mm Shutter – 2 Port	100-282

Excel Flat 45 x 45 mm Keystone Shutters

The Excel Flat Keystone Shutters are available in 1 and 2 port versions. Each shutter will support all of the Excel Keystone Jacks enabling screened and unscreened Category 5e, 6 and 6_A terminations to be presented in a uniform fashion. Fixing clips are positioned on the rear of the shutter to allow the fitment to either faceplates or trunking. Each port is protected with a curved, spring loaded shutter in matching material. The shutter comes complete with paper label and fitted clear window.



Features

- Accepts all Excel Keystone Jacks
- Available in 1 & 2 Port versions
- Directly mount in trunking or faceplate
- Flat shape
- Large labelfield

Description	Part Number
Excel Flat 45 x 45 mm Shutter – 1 Port	100-289
Excel Flat 45 x 45 mm Shutter – 2 Port	100-290
Excel Flat 22.5 x 45 mm Shutter – 1 Port	100-294
Excel Flat 80mm x 80mm Faceplate for 100-283	100-295

Excel Angled 2 Port Keystone 50 x 50 mm Faceplate



The Excel Angled 2 Port Keystone 50 x 50 mm Faceplate comprises of the fascia and mounting frame in an option of colours. The frame accepts all of the Unscreened and Screened Excel Keystone Jacks and presents them in an angled orientation to reduce the depth of the back box. The mounting frame is complete with a fitting to accept a 6mm spade connector if earth bonding is required.

The 50 x 50mm fascia is available in two colours

- RAL 9010 Pure White
- RAL 1013 Oyster White

Features

- 50 x 50mm Fascia & Mounting Frame
- Label field and lens
- Option of colours available

Description	Part Number
Excel Angled 2 Port Keystone 50x50mm Faceplate RAL9010 (Pure White)	100-283
Excel Angled 2 Port Keystone 50x50mm Faceplate RAL1013 (Oyster White)	100-284

Excel 2 Port 6c Collar and Mounting Frame



The Excel 2 Port 6c Collar comes complete with attachment screws for the supplied die-cast metal mounting frame. The collar accepts two 6c sized shutters or modules. This is specifically suited to be used with the Excel 6c Keystone Shutter (100-018) and the Excel Angled 6c Shutter (100-022). This collar is compatible with the Legrand Valena faceplates.

Features

- Accepts two 6c shutters
- Label field and lens
- Option of colours available

Description	Part Number
Excel 2 Port 6c Collar and Mounting Frame	100-410



Excel Grid Outlet Position (GOP) Box Plus

The Excel Grid Outlet Position (GOP) Box Plus has been developed from the successful original versions. This range is available in four versions from 2 Way to 6 Way. The 2 and 4 way are available with a 25mm flexible conduit fixing point. The 4 and 6 way are available with a 32mm flexible conduit fixing point. The range has been developed for fixing to the end of flexible conduit typically where outlets are presented in a grid layout with cable containment mounted within a raised floor system. The GOP Box then has a degree of flexibility to be positioned within the radius of the flexible conduit to suit the office layout. 25 mm and 32 mm 'L' Brackets are available to fix the other end of the flexible conduit to the floor slab. GOP Boxes are typically then attached to the underside of the desk, the flexible conduit passing through the floor tile via a grommet.

These Plus versions are enhanced with cable tie saddles adjacent to the conduit fixing point to accept either nylon or hook & loop ties. This permits the cable to be secured if required. Additionally the GOP box has a hole at each end of the upper case to accept self-tap screws for fixing to adaptor plates or bespoke brackets. Supplied with the GOP Boxes are black rubber blanks for the un-used 6c apertures. The 2 way is supplied with 1 blank, the 4 way is supplied with 2 blanks, the 6 way with 4 blanks and the 12 way with 12 blanks. The blanks are also available separately.

The flexible conduit fixing hole is slotted to aid cable installation. As the flexible conduit hole is part of the jack mounting metal work it ensures easy termination of the outlet while maintaining the cable management. The base has two fixing holes for mounting where required. The two parts of the box are assembled with a single machine screw.

GOP Boxes and 'L' Brackets are sold in packs of 10 to reduce packaging waste. The flexible conduit is sold separately.



Features

- 2, 4, 6 and 12 Way Versions
- 25 and 32 mm Versions
- Cable tie anchor points
- 'L' Brackets available
- 6c aperture size
- Blanks included
- Accepts Category 5e, Category 6 or Category 6_A
- 25 Year System Warranty Available

Description	Part Number	GOP Box Dimensions		
		Length	Width	Height
Excel 2 Way GOP Box Plus – 25 mm – Pack of 10	350-639	105 mm	62 mm	55 mm
Excel 4 Way GOP Box Plus – 25 mm – Pack of 10	350-640	160 mm	62 mm	60 mm
Excel 4 Way GOP Box Plus – 32 mm – Pack of 10	350-641	160 mm	62 mm	60 mm
Excel 6 Way GOP Box Plus – 32 mm – Pack of 10	350-642	220 mm	62 mm	70 mm
Excel 12 Way GOP Box Plus – 32 mm - Each	350-643	216mm	134mm	71mm
Excel LJ6c Black Rubber Blank – Pack of 10	350-645	Approx dimensions		
Excel 25 mm Flexible Conduit "L" Bracket Plus – Pack of 10	750-102			
Excel 32 mm Flexible Conduit "L" Bracket Plus – Pack of 10	750-103			

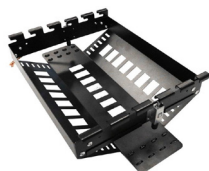
Excel Grid Outlet Position (GOP) Box Plus (continued)

Compatibility

Specifications						
GOP Box Plus	100-757 Excel Category 5e Unscreened Low Profile 6c Module	100-202-WT & 100-202-BK Excel Category 5e Unscreened Low Profile Toolless Keystone Jack + 100-022 6c Angled Shutter	100-297 Excel Category 6 Unscreened Low Profile 6c Module	100-215-WT & 100-215-BK Excel Category 6 Unscreened Low Profile Toolless Keystone Jack + 100-022 6c Angled Shutter	100-156 Excel Category 6 _A Unscreened Keystone Jack + 100-022 6c Angled Shutter	100-181 Excel Category 6 _A Low Profile Screened Keystone Jack - Toolless + 100-022 6c Angled Shutter
2 Way GOP Box Plus – 25 mm	✓	✓	✓	✓	✓	✓
4 Way GOP Box Plus – 25 mm	✓	✓	✓	✓		✓
4 Way GOP Box Plus – 32 mm	✓	✓	✓	✓	✓	✓
6 Way GOP Box Plus – 32 mm	✓	✓	✓	✓		✓
12 Way GOP Box Plus – 32 mm	✓	✓	✓	✓		✓

Please ask for details about our in-house assembly service to save time on site.

Excel 24 Port Overhead Tray Consolidation Point



The Excel 24 port overhead tray consolidation point has been designed to allow 24 LJ6C modules to be installed onto standard basket tray allowing up to 24 connections to be installed above cabinets or anywhere along the containment run where extra points are needed. The unique locking mechanism allows the unit to be fitted / moved easily. The frame hooks onto the basket tray and the two push button plungers hold the frame in position.

Features

- 24 copper ports
- Toolless installation
- Integrated cable tie point



Description	Part Number
Excel 24 Port Overhead Tray Consolidation Point	100-927

Excel 12 Way Low Profile Consolidation Point

The Excel 12 Port low profile unloaded 6c consolidation point box in grey is perfect for being used in floor and ceiling voids. This unit allows for dynamic installations where routing of cables can be adapted and re-routed as and when needed.

The unit is designed with ergonomics in mind. The unit has the outlets separated into 3 sets of 4 with each set placed on a different angle to allow for routing in different directions but with bend radius at a minimum.

Features

- 2 x 32mm Diameter Conduit opening



Description	Part Number
Excel 12 Way Low Profile Consolidation Point	350-644

Category 5e Contractor Pack



Save up to 75% on the most popular Category 5e installation products

The Excel Contractor Pack saves both time and money when ordering the essential items for Category 5e installations.

If ordered separately three part codes would be required, and the total cost at our recommended list prices would be much greater.

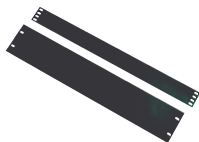
Everything will be delivered in one box ready for you or your customer to install.

Each Contractor Pack contains the following:

- 1 x 100-726 Excel 1U 24 port Black Category 5e Patch Panel
- 1 x Excel 1U Black 5 Plastic Hoop Management Bar
- 12 x 100-704 Excel Single Gang Bevelled Faceplates loaded with two Category 5e Modules

Description	Part Number
Category 5e Contractor Pack (1 x 100-726 Patch Panel, 12 x 100-704 Dual Faceplates, 1 x Cable Manager)	100-850

Excel Blanking Plates and Letterbox Panels



To improve cabinet appearance Blank Plates can be installed to cover unused space. Letterbox Panels allow patch cords to be fed to or from the rear of the cabinet.

Features

- Enhances Cabinet Appearance

Description	Part Number
Excel 1U 19" Horizontal Snap In Blank Panel - Black	100-591
1U Double Brush Strip - Middle Split Black	100-595
1U Blank Plate Black	100-598
1U Brush Strip Black	100-599
2U Blank Plate Black	100-602
Excel 2U 19" Horizontal Snap In Blank Panel - Black	100-592
3U Blank Plate Black	100-606
Excel 3U 19" Horizontal Snap In Blank Panel - Black	100-593
1U Letterbox Plate Black	100-610

Please check with your local Excel Sales Office or distributor for in country product availability

Excel Cable Management Bars

A wide range of 19" Vertical Cable Management bars are available.

Features

- Metal or Plastic Management Hoops
- 1 and 2U Options
- Horizontal and Vertical Hoops
- Cage Nut Set included



Description	Part Number
1U Black Bar, 4 Vertical Metal 65mm Hoops	100-582
1U Black Bar, 5 Vertical Metal 100mm Hoops	100-583
1U Black Bar, 5 Vertical Plastic 65mm Hoops	100-586
1U Black Bar, 5 Vertical Plastic 65mm Hoops - 2 Pack	100-048

**RANGE
EXTENDED**
excel

Excel Chrome Management Bar

1U 19" 5 Way Chrome Cable Management Bar. Provides an aesthetically pleasing and efficient way of managing patch cords, with built in 'letter box' cut out for excess cable.

Features

- Complements the Excel Category 6_A Chrome Panel and Modules

Description	Part Number
1U 5 Way Chrome Cable Management Bar	100-031
0.5U 5 Way Chrome Cable Management Bar	100-581



Cage Nuts

Cage nuts are used to fit equipment to the 19" profiles.

Description	Part Number
Cage Nuts, pack of 50	M6CNU





Head Office

Excel House
Junction Six Industrial Park
Electric Avenue
Birmingham B6 7JJ
England

T: +44 (0)121 326 7557

E: sales@excel-networking.com

